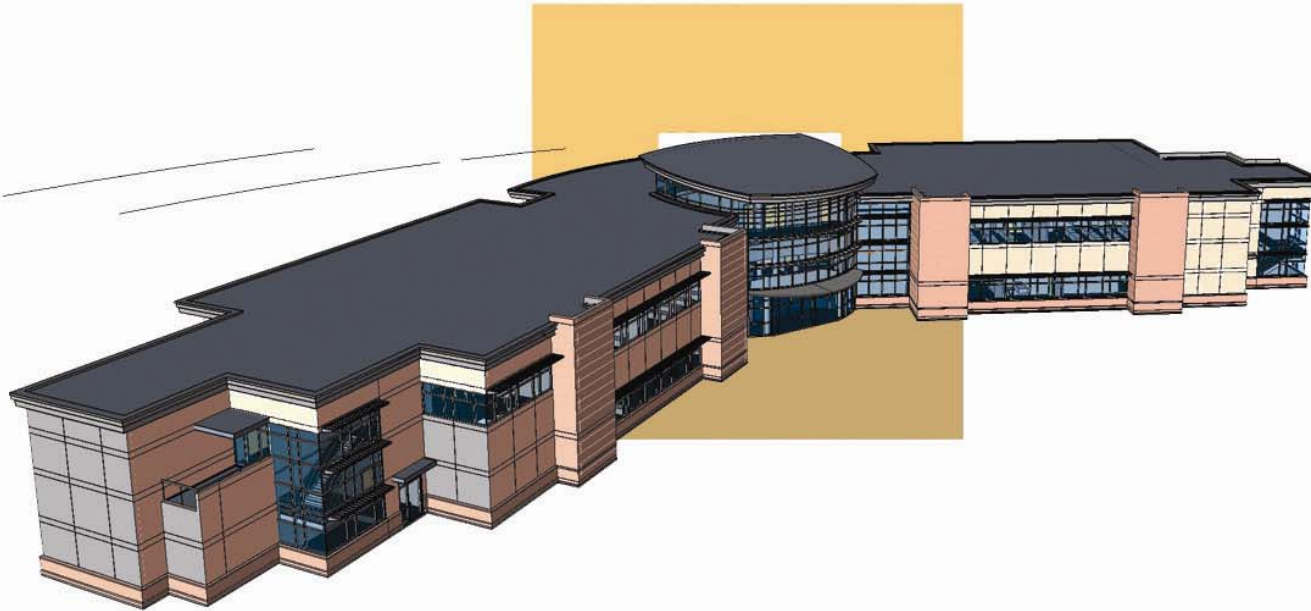


Eastfield College Pleasant Grove Campus Dallas County Community College District




Eastfield College | PLEASANT GROVE CAMPUS

DALLAS COUNTY COMMUNITY COLLEGE DISTRICT



Purpose of Today's Forum

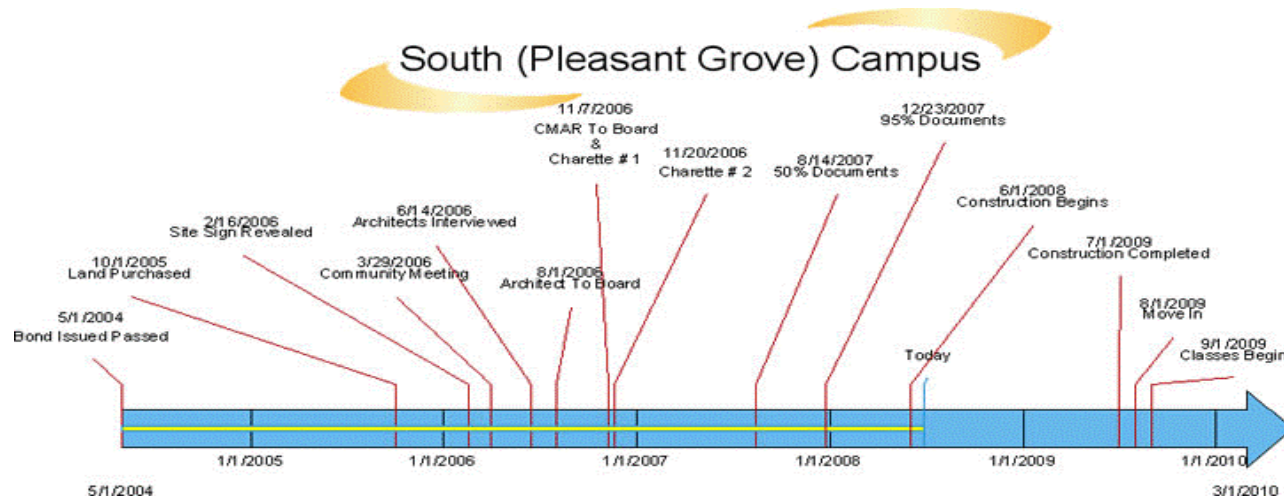
- Share an overview of the Pleasant Grove campus
- Provide a timeline for opening the campus
- Show the mission of Pleasant Grove campus

- 
- Share drafted operational strategies
 - Hear questions and comments
 - Provide a way for employees to submit further questions



The Campus

Size:	45,000 Sq. Ft.
Classrooms:	10 Smart Rooms
Computer Labs:	4 State of the art labs
Construction Costs:	\$ 9 million
Construction Period:	May 2008-May 2009
Move in timeline:	June/July 2009
Fall Registration:	August 2009



The Building



East View



Southwest View



Eastfield College | PLEASANT GROVE CAMPUS

DALLAS COUNTY COMMUNITY COLLEGE DISTRICT



Timeline


1. April 27, 2009 - Hire and begin training PGC Personnel
2. May 31, 2009 - Completion of PGC building
3. June 1 - 19, 2009 - Furniture & Equipment installed
5. June 22, 2009 - Move personnel to PGC
6. July 6, 2009 - Begin assessing students for fall semester
7. August 3, 2009 - Grand Opening/Community Tours
8. August 22, 2009 - Saturday registration fall semester
9. August 24 - 28, 2009 - Fall Classes begin


The Mission

The mission is to serve the educational needs of the Pleasant Grove community and create opportunities for students to further their education at the Eastfield main campus.

How do we accomplish this mission?

- Research and assess the educational needs of the community.
- Provide relevant courses in a flexible, student-centered environment.
- Develop a seamless transition from the Pleasant Grove campus to the Eastfield main campus.

- 
- Delineate employee roles and responsibilities between the community campus and the main campus through the “One College-Two Campus” matrix.
 - Define policies and procedures prior to the grand opening of the Pleasant Grove campus.

- 
- Maintain open lines of communication between the two campuses through blended positions, open dialogue with supervisors, and campus forums.
 - Executive Director will continue to provide weekly updates to Eastfield's Executive Council and will produce an annual report to the main campus and the Pleasant Grove community.

Thank You!



Eastfield College

DALLAS COUNTY COMMUNITY COLLEGE DISTRICT