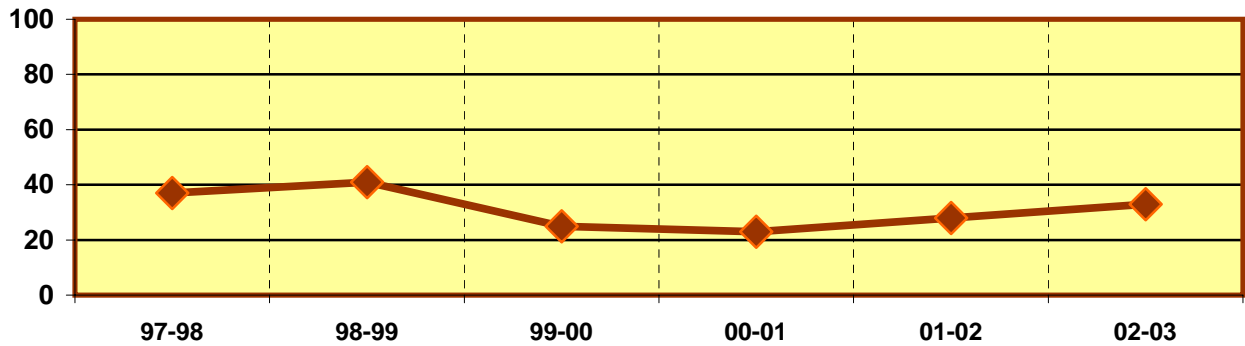


**EASTFIELD COLLEGE  
PROGRAM/DISCIPLINE REVIEW DATA SHEET  
ACADEMIC PROGRAM LEVEL - ACADEMIC YEAR 2002 - 2003**

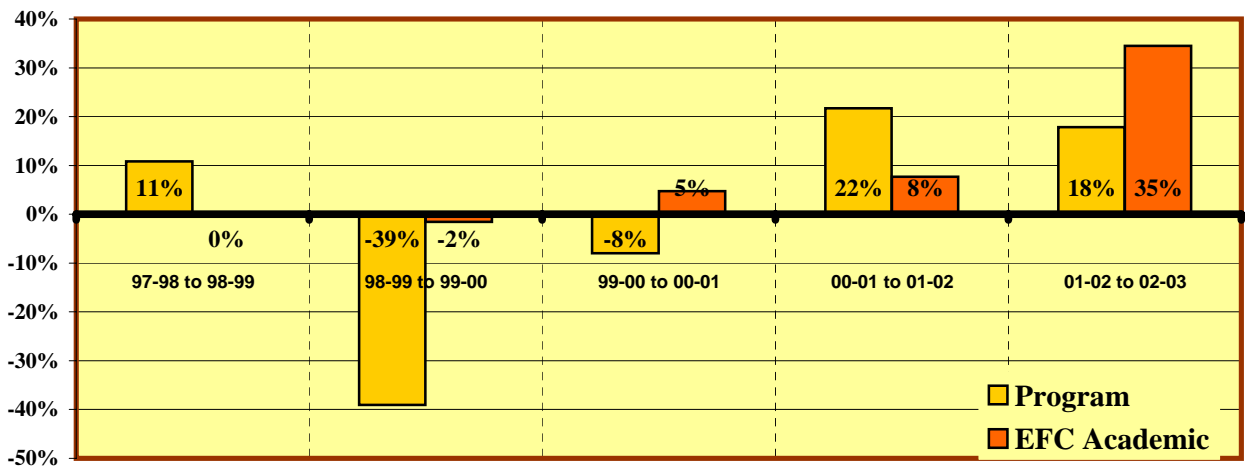
**ANTHROPOLOGY(ANTH)**

**PROGRAM ENROLLMENT**



	Enrollments					
	97-98	98-99	99-00	00-01	01-02	02-03
<b>Program</b>	37	41	25	23	28	33
<b>All EFC Academic Programs</b>	29,344	29,282	28,818	30,183	32,502	43,718

**% Change in Enrollment**



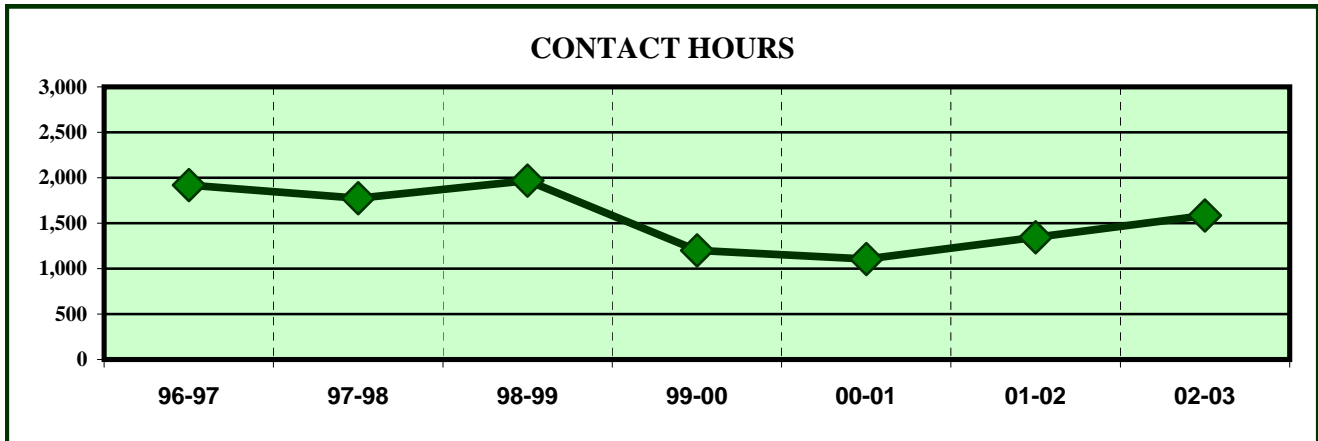
	% Change				
	97-98 to 98-99	98-99 to 99-00	99-00 to 00-01	00-01 to 01-02	01-02 to 02-03
<b>Program</b>	10.8%	-39.0%	-8.0%	21.7%	17.9%
<b>All EFC Academic Programs</b>	-0.2%	-1.6%	4.7%	7.7%	34.5%

**ENROLLMENT INDICATORS**

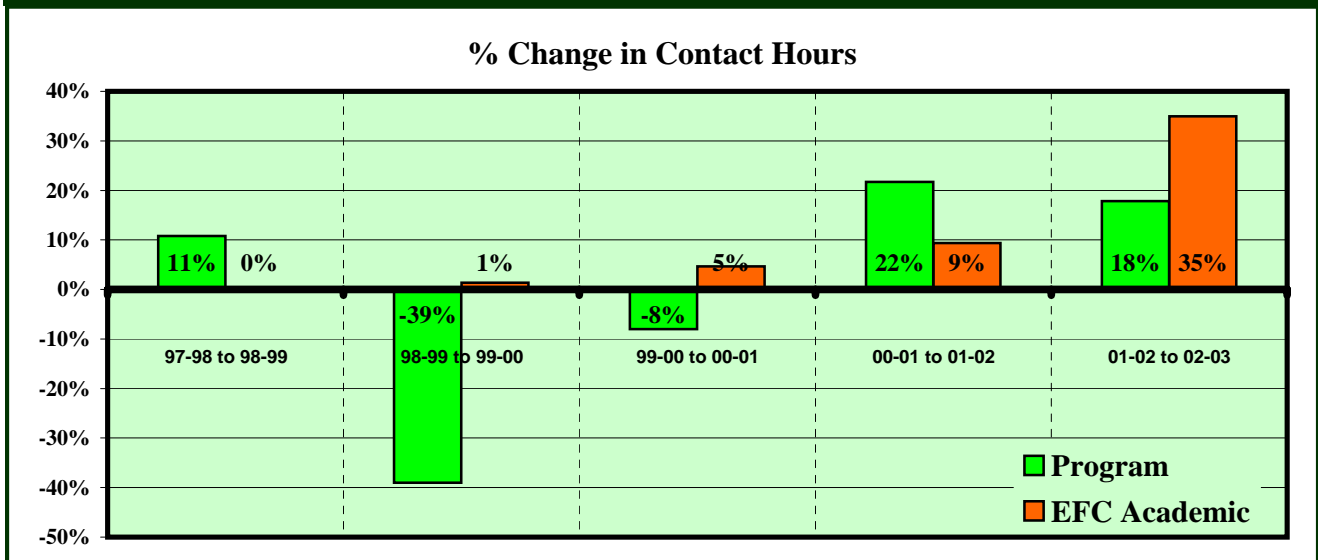
	% Change Comparisons			Program Decreases?			Down more or increase less than all Academic Programs		
	5 year	3 year	1 year	In	YES/NO	Score	For	YES/NO	Score
<b>Program</b>	-2.2%	10.7%	17.9%	5 of 5 yrs	NO	5	5 yr avg.	YES	0
<b>All ACAD</b>	9.8%	17.2%	34.5%	4 of 5 yrs	NO	5	3 yr avg.	YES	1
				Last 3 of 5 yrs	NO	5	1 yr avg.	YES	3
<b>OF POSSIBLE 30 POINT TOTAL</b>							<b>19</b>	<b>63.3%</b>	

**EASTFIELD COLLEGE**  
**PROGRAM/DISCIPLINE REVIEW ACADEMIC PROGRAM LEVEL**  
**ACADEMIC YEAR 2002 - 2003**

**ANTHROPOLOGY (ANTH)**



	CONTACT HOURS						
	96-97	97-98	98-99	99-00	00-01	01-02	02-03
Program	1,920	1,776	1,968	1,200	1,104	1,344	1,584
All Academic Programs	1,633,472	1,609,976	1,610,056	1,632,169	1,707,744	1,867,774	2,521,156

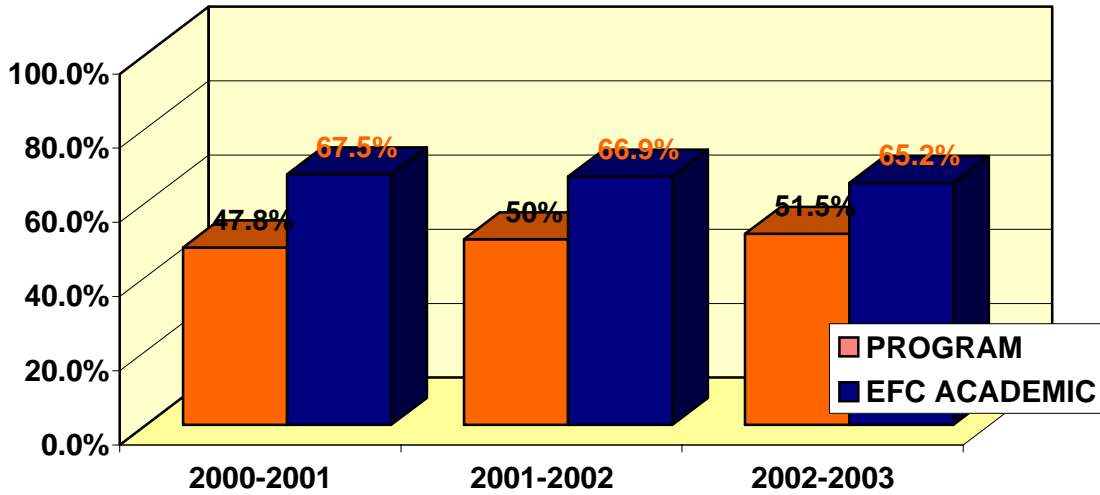


	% Change					
	96-97 to 97-98	97-98 to 98-99	98-99 to 99-00	99-00 to 00-01	00-01 to 01-02	01-02 to 02-03
Program	-7.5%	10.8%	-39.0%	-8.0%	21.7%	17.9%
All Academic Programs	-1.4%	0.0%	1.4%	4.6%	9.4%	35.0%

**CONTACT HOUR INDICATORS**

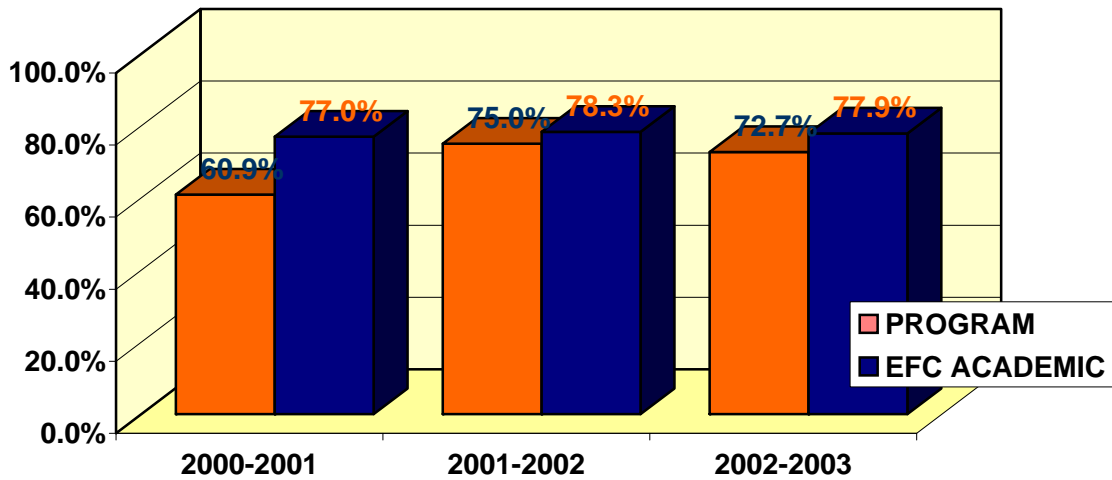
	% Change Comparisons			Program Decreases?			Down more or increase less than all Academic Programs		
	5 year	3 year	1 year	In	YES/NO	Score	For	YES/NO	Score
Program	-2.2%	10.7%	17.9%	5 of 5 yrs	NO	5	5 yr avg.	YES	0
All Acad Prg.	11.3%	18.2%	35.0%	4 of 5 yrs	NO	5	3 yr avg.	YES	1
				Last 3 of 5 yrs	NO	5	1 yr avg.	YES	3
<b>OF POSSIBLE 30 POINT TOTAL</b>								<b>19</b>	<b>63.3%</b>

**CLASSROOM SUCCESS  
ANTHROPOLOGY (ANTH)**



**% OF STUDENTS RECEIVING A, B OR C IN PROGRAM COURSES**

	2000-2001	2001-2002	2002-2003
PROGRAM	47.8%	50%	51.5%
EFC-ACAD	67.5%	66.9%	65.2%



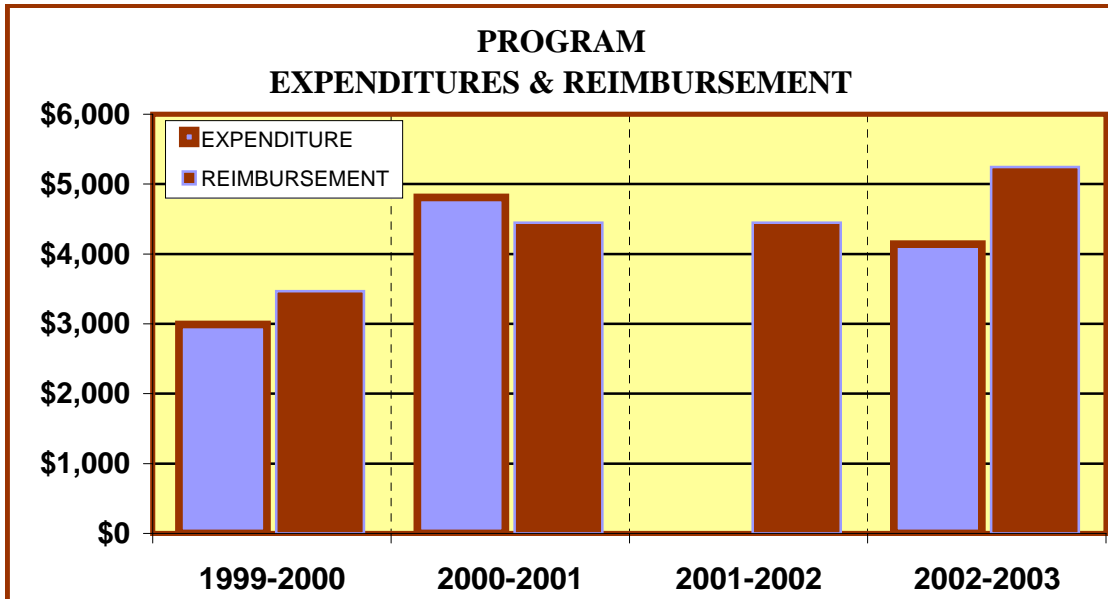
**% COURSE COMPLETION FOR PROGRAM**

	2000-2001	2001-2002	2002-2003
PROGRAM	60.9%	75.0%	72.7%
EFC-ACAD	77.0%	78.3%	77.9%

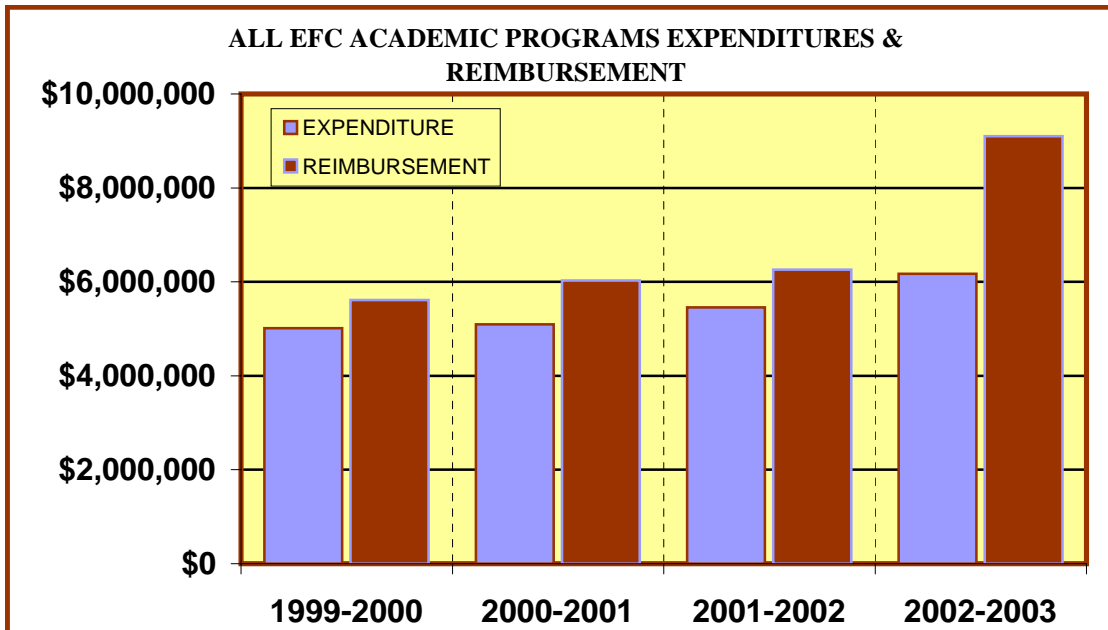
**ACADEMIC SUCCESS INDICATORS**

Completion Rate Over %75			Percent of A, B, & C Grades More than 50%			ACADEMIC SCORE OUT OF POSSIBLE 6 POINT SCORE	
In	YES/NO	Score	In	YES/NO	Score	#	%
2002-2003	NO	0	2002-2003	YES	3	3	50%

**EASTFIELD COLLEGE  
ACADEMIC PROGRAM REVIEW  
ACADEMIC YEAR 2002 - 2003**

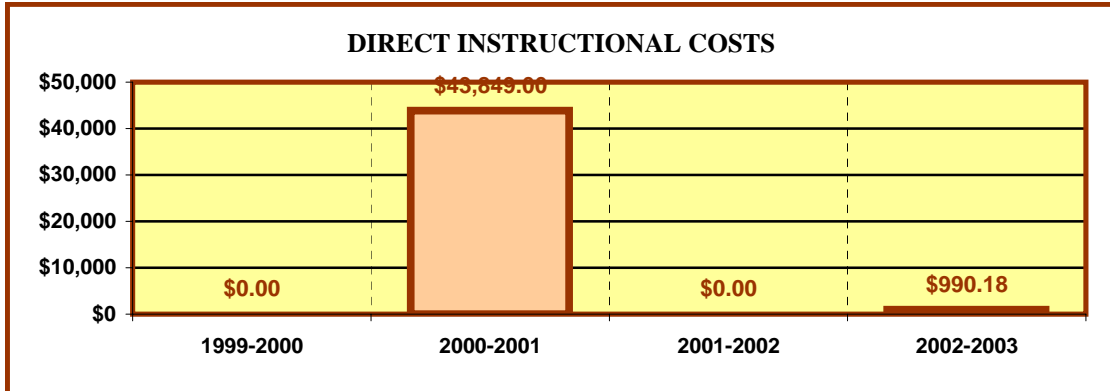


	<b>ANTHROPOLOGY</b>			
	1999-2000	2000-2001	2001-2002	2002-2003
<b>EXPENDITURES</b>	\$ 2,989.24	\$ 4,808.26	\$ -	\$ 4,141.98
<b>REIMBURSEMENT</b>	\$ 3,466.56	\$ 4,448.64	\$ 4,448.64	\$ 5,243.04

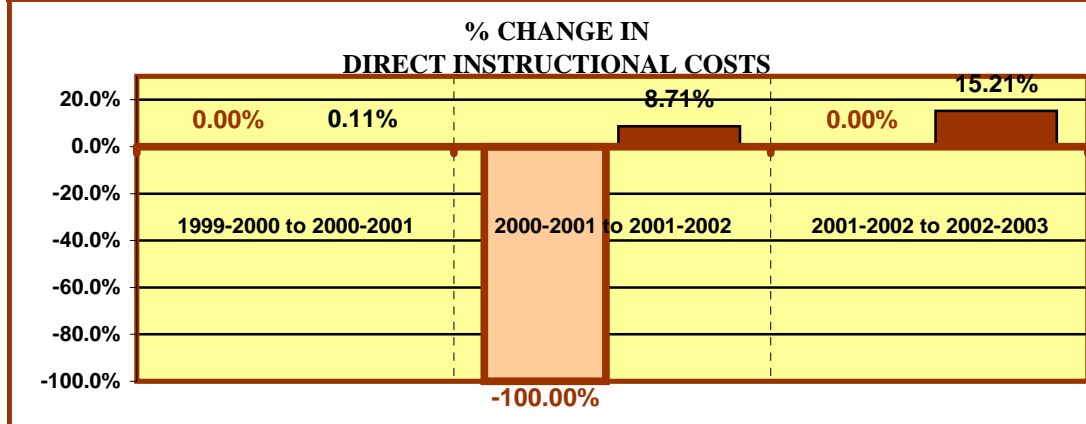


	<b>All EFC ACADEMIC PROGRAMS</b>			
	1999-2000	2000-2001	2001-2002	2002-2003
<b>EXPENDITURES</b>	\$ 5,015,641.39	\$ 5,092,920.92	\$ 5,458,424.21	\$ 6,170,123.68
<b>REIMBURSEMENT</b>	\$ 5,612,853.21	\$ 6,030,529.36	\$ 6,259,320.74	\$ 9,097,655.76

**EASTFIELD COLLEGE  
ACADEMIC PROGRAM REVIEW  
ACADEMIC YEAR 2002 - 2003**



	DIRECT INSTRUCTIONAL COSTS			
	1999-2000	2000-2001	2001-2002	2002-2003
<b>PROGRAM</b>	\$ -	\$ 43,849.00	\$ -	\$ 990.18
All EFC Academic	\$ 4,287,160.88	\$ 4,291,812.69	\$ 4,665,629.90	\$ 5,375,293.29



	% CHANGE IN DIRECT INSTRUCT. COSTS		
	1999-2000 to 2000-2001	2000-2001 to 2001-2002	2001-2002 to 2002-2003
<b>PROGRAM</b>	N/A	-100.00%	N/A
All EFC Academic Programs	0.11%	8.71%	15.21%

**FINANCIAL INDICATORS**

FALL, 2002 PROGRAM/DISCIPLINE (CostCenter) Reimbursement to Cost Center Expenses are positive in					
2002-2003		BOTH 2002-2003 & 2001-2002		3 OF LAST 4 YEARS	
YES/NO	Score	YES/NO	Score	YES/NO	Score
YES	3	NO	0	YES	3
DIRECT INSTRUCTIONAL COSTS DECREASED OR REMAINED THE SAME BETWEEN:					
2001-2002 & 2002-2003		1999-2000 & 2002-2003		BOTH 01-02 & 02-03 AND 00-01 & 01-02	
YES/NO	Score	YES/NO	Score	YES/NO	Score
YES	3	NO	0	NO	0
INSTRUCTIONAL COSTS DECREASED MORE THAN EFC ACAD 01-02 TO 02-03			SCORE OF A POSSIBLE 21 POINT TOTAL		
YES/NO	Score	SCORE		%	
NO	0	9		42.9%	
OVERALL REVIEW TOTAL OF POSSIBLE 87 POINTS					
			SCORE		%
			50		57.5%