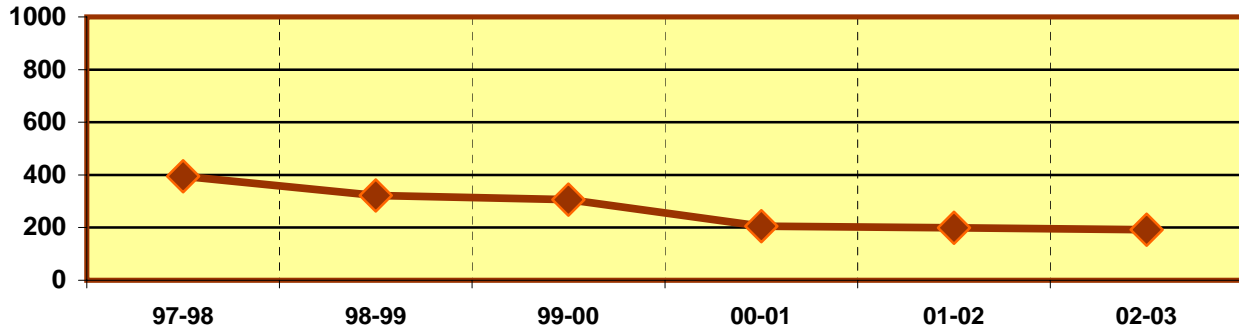


**EASTFIELD COLLEGE
PROGRAM/DISCIPLINE REVIEW DATA SHEET
TECHNICAL PROGRAM LEVEL - ACADEMIC YEAR 2002 - 2003**

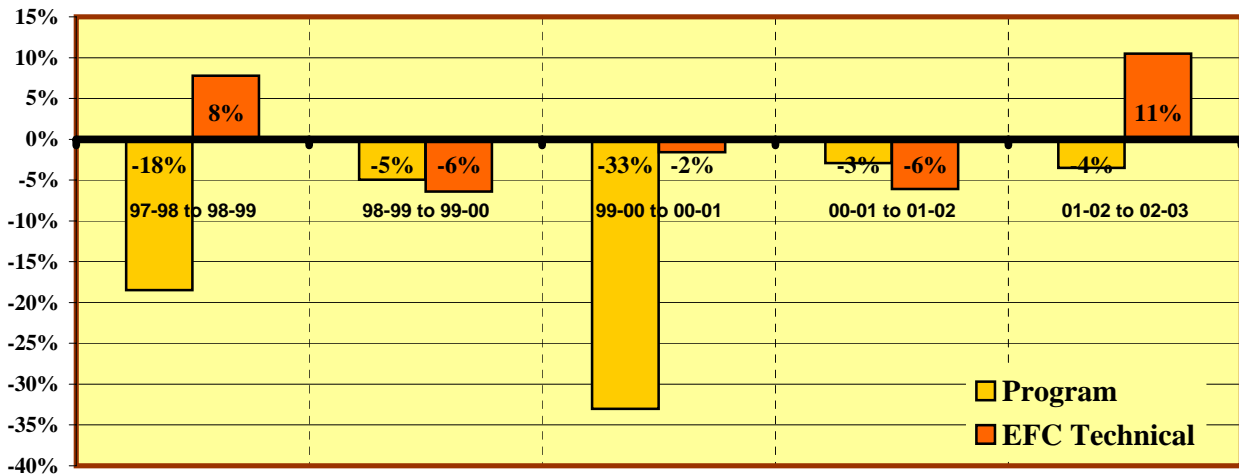
INTERPRETER TRAINING (SLNG)

PROGRAM ENROLLMENT



	Enrollments					
	97-98	98-99	99-00	00-01	01-02	02-03
Program	395	322	306	205	199	192
All Tech-Occ Programs	11,345	12,228	11,442	11,255	10,571	11,678

% Change in Enrollment



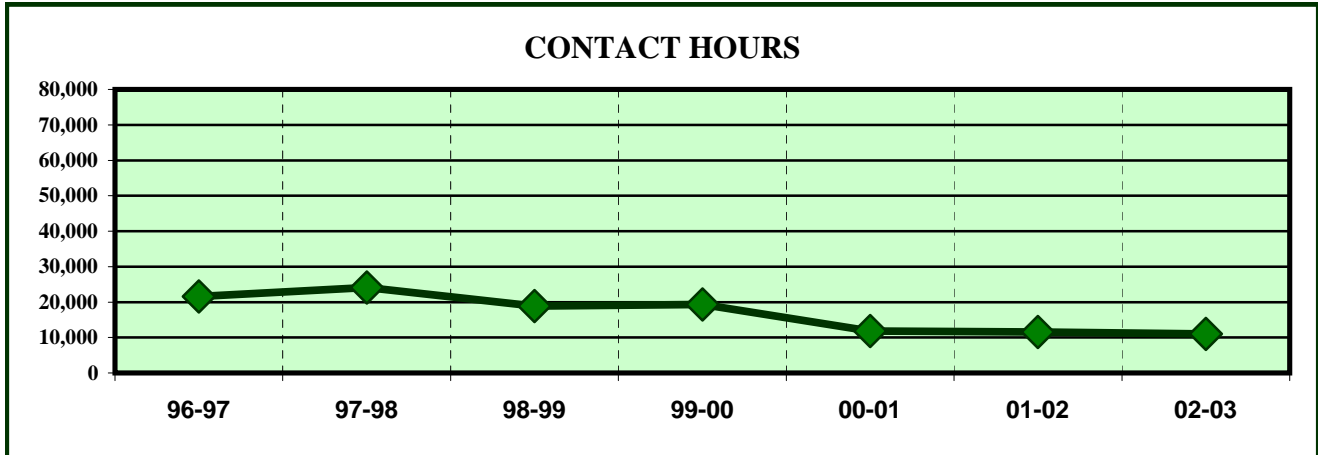
	% Change				
	97-98 to 98-99	98-99 to 99-00	99-00 to 00-01	00-01 to 01-02	01-02 to 02-03
Program	-18.5%	-5.0%	-33.0%	-2.9%	-3.5%
All Tech-Occ Programs	7.8%	-6.4%	-1.6%	-6.1%	10.5%

ENROLLMENT INDICATORS

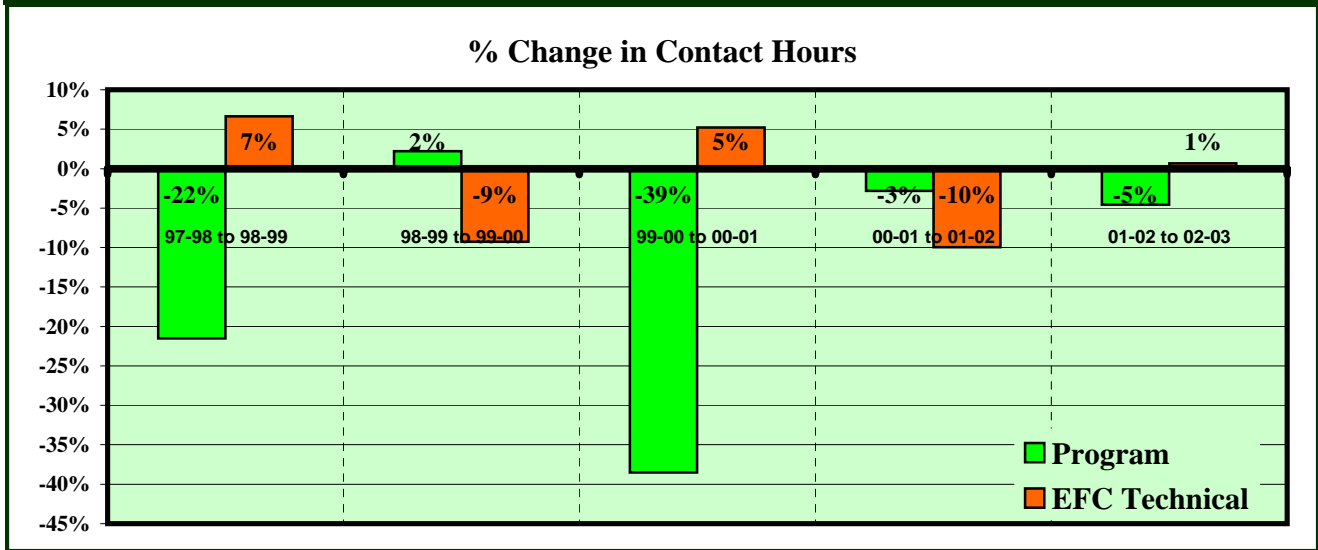
	% Change Comparisons			Program Decreases?			Down more than all Tech-Oc?			
	5 year	3 year	1 year	In	YES/NO	Score	For	YES/NO	Score	
Program	-10.3%	-12.4%	-3.5%	5 of 5 yrs	YES	0	5 yr avg.	YES	0	
All Tech-OC	0.6%	0.7%	10.5%	4 of 5 yrs	YES	1	3 yr avg.	YES	1	
				Last 3 of 5 yrs	YES	3	1 yr avg.	YES	3	
*OR UP LESS THAN							OF POSSIBLE 30 POINT TOTAL		8	26.7%

EASTFIELD COLLEGE
PROGRAM/DISCIPLINE REVIEW TECHNICAL PROGRAM LEVEL
ACADEMIC YEAR 2002 - 2003

INTERPRETER TRAINING (SLNG)



	CONTACT HOURS						
	96-97	97-98	98-99	99-00	00-01	01-02	02-03
Program	21,616	24,080	18,896	19,312	11,872	11,536	11,008
All Tech-Occ Programs	991,664	980,976	1,046,208	949,316	998,828	899,536	905,696

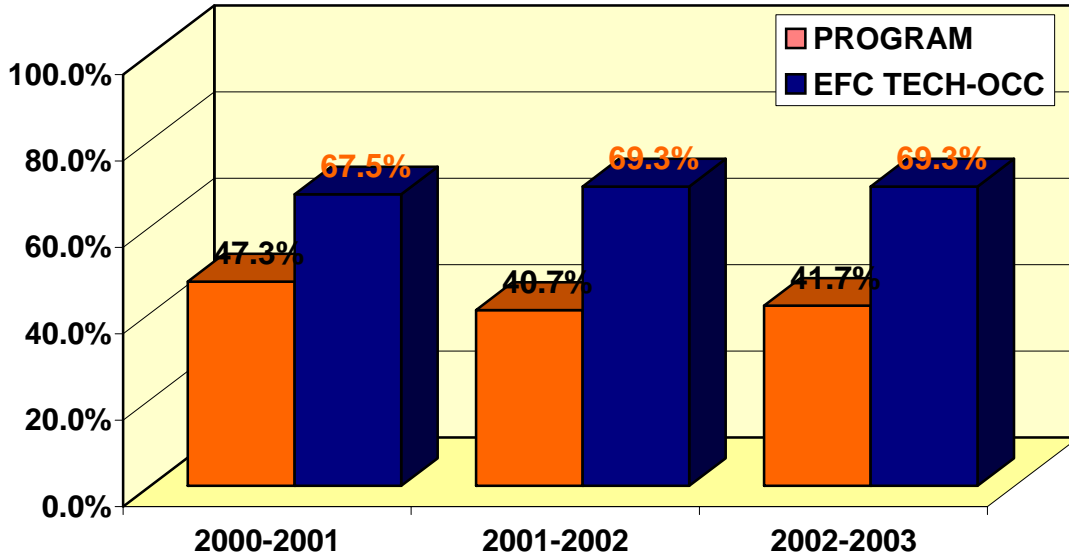


	% Change					
	96-97 to 97-98	97-98 to 98-99	98-99 to 99-00	99-00 to 00-01	00-01 to 01-02	01-02 to 02-03
Program	11.4%	-21.5%	2.2%	-38.5%	-2.8%	-4.6%
All Tech-Occ Programs	-1.1%	6.6%	-9.3%	5.2%	-9.9%	0.7%

CONTACT HOUR INDICATORS

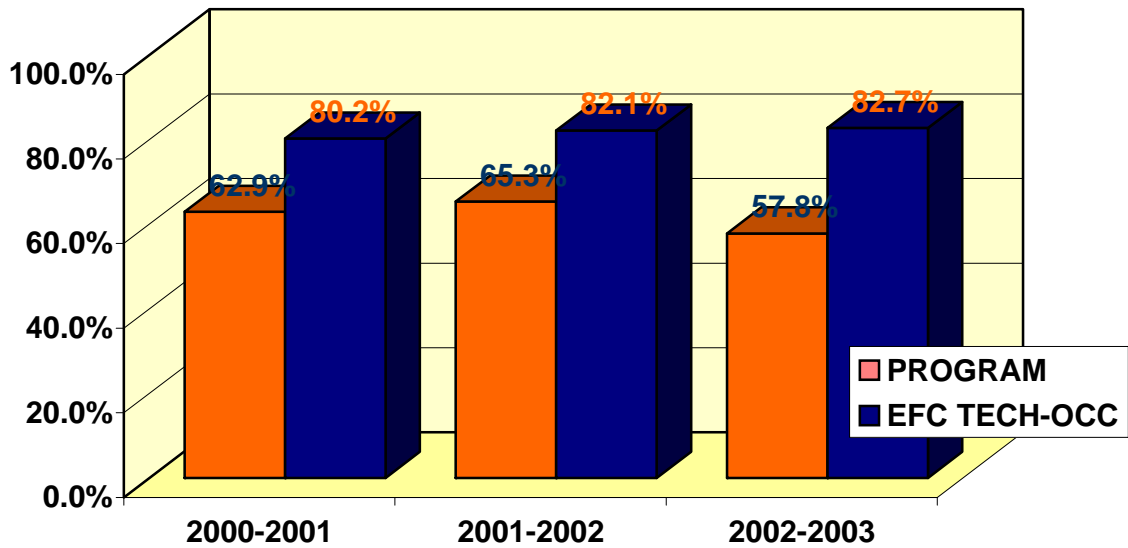
	% Change Comparisons			Program Decreases?			Down more than Tech-Occ?		
	5 year	3 year	1 year	In	YES/NO	Score	For	YES/NO	Score
Program	-9.8%	-14.3%	-4.6%	5 of 5 yrs	NO	5	5 yr avg.	YES	0
All Tech-OC	-1.7%	-1.5%	0.7%	4 of 5 yrs	YES	1	3 yr avg.	YES	1
				Last 3 of 5 yrs	YES	3	1 yr avg.	YES	3
*OR UP LESS THAN								OF POSSIBLE 30 POINT TOTAL	
								13	43.3%

**CLASSROOM SUCCESS
INTERPRETER TRAINING (SLNG)**



% OF STUDENTS RECEIVING A, B OR C IN PROGRAM COURSES

	2000-2001	2001-2002	2002-2003
PROGRAM	47.3%	40.7%	41.7%
EFC-TECH	67.5%	69.3%	69.3%

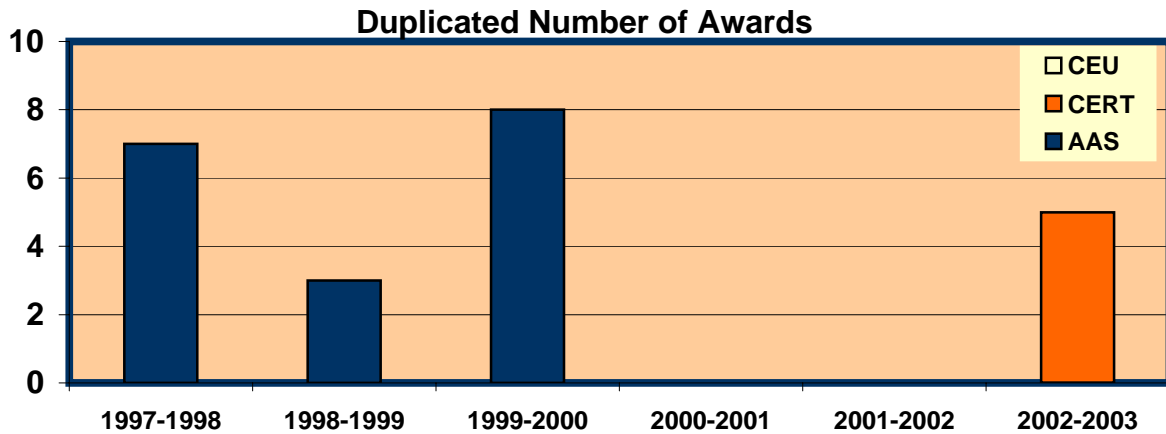


% COURSE COMPLETION FOR PROGRAM

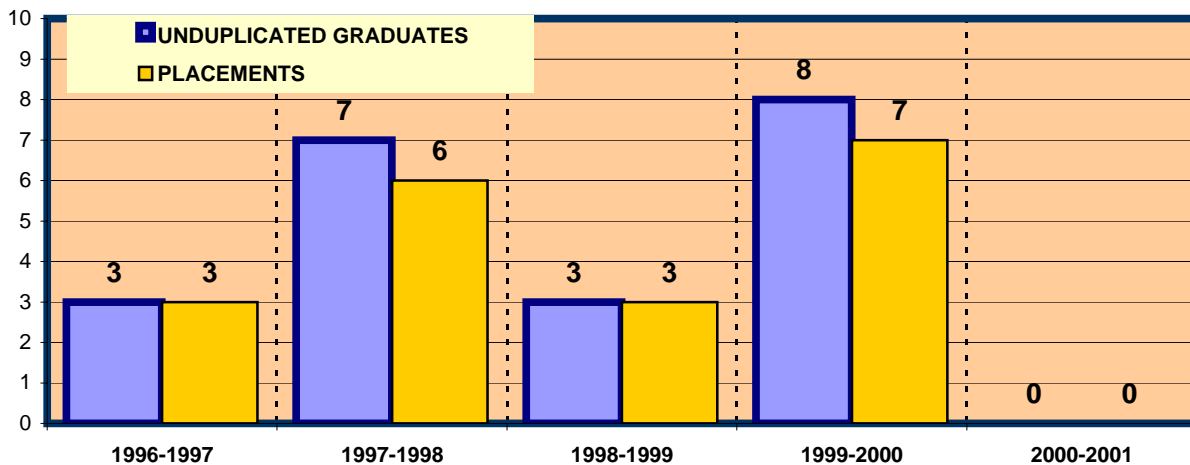
	2000-2001	2001-2002	2002-2003
PROGRAM	62.9%	65.3%	57.8%
EFC-TECH	80.2%	82.1%	82.7%

EASTFIELD COLLEGE
PROGRAM/DICIPLINE REVIEW
TECHNICAL PROGRAM LEVEL - ACADEMIC YEAR 2002-2003

STUDENT OUTCOMES SUCCESS INTERPRETER TRAINING (SLNG)



	1997-1998	1998-1999	1999-2000	2000-2001	2001-2002	2002-2003
AAS	7	3	8	0	0	0
CERT	0	0	0	0	0	5
CEU	0	0	0	0	0	0
PROGRAM TOTAL	7	3	8	0	0	5



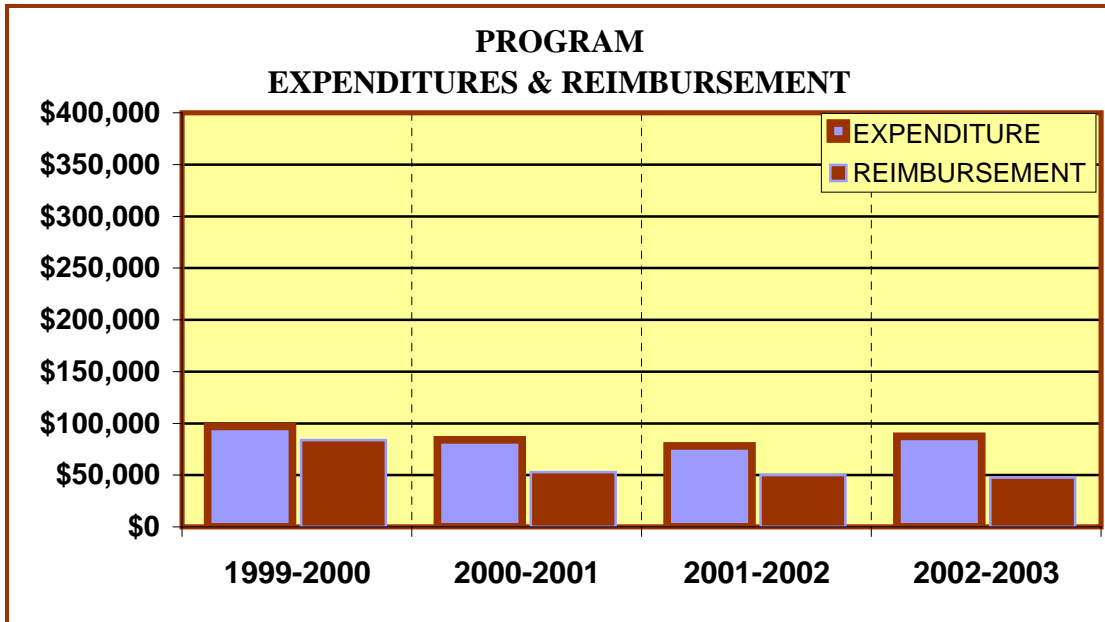
PROGRAM PLACEMENTS

	1996-1997	1997-1998	1998-1999	1999-2000	2000-2001	2001-2002
Unduplicated Grads	3	7	3	8	0	
Placements	3	6	3	7	0	
Program Percentage	100.0%	85.7%	100.0%	87.5%	N/A	

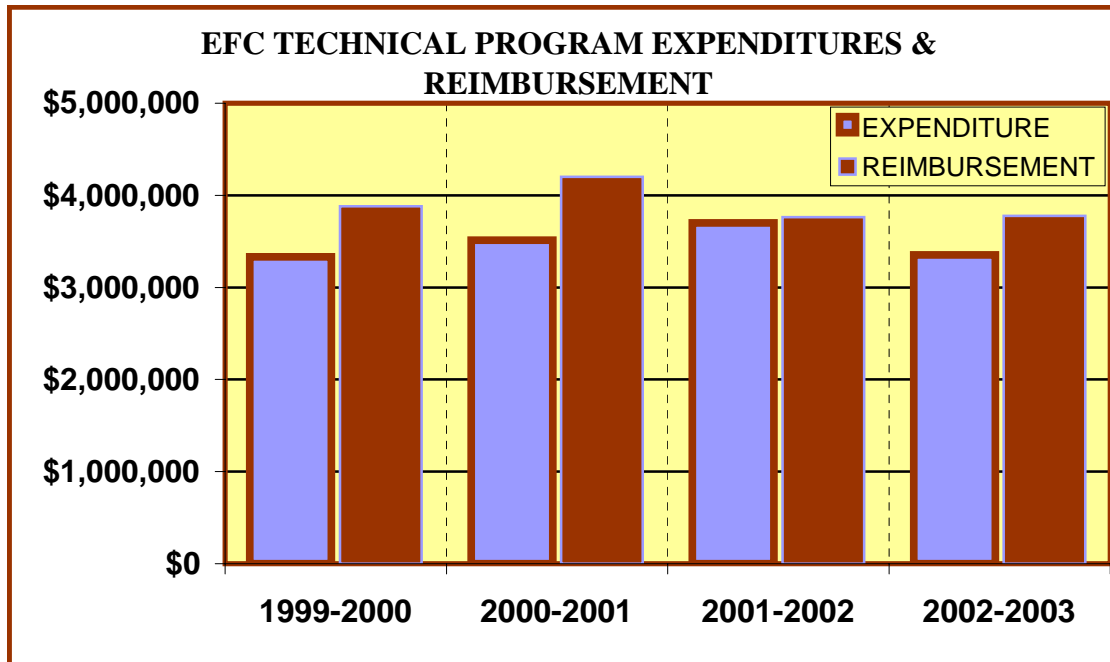
SUCCESS INDICATORS

Completion Rate Over %75			Percent of A, B, & C Grades More than 50%			TECH SCORE OUT OF POSSIBLE 9 POINT SCORE	
In	YES/NO	Score	In	YES/NO	Score		
2002-2003	NO	0	2002-2003	NO	0	#	%
PLACEMENT Over %75			Technical Program Awards 15 Or More Over 3 Years			0	0%
In	YES/NO	Score	In	YES/NO	Score		
2000-2001	N/A	N/A	2002-2003	NO	0		

**EASTFIELD COLLEGE
TECHNICAL PROGRAM REVIEW
ACADEMIC YEAR 2002 - 2003**

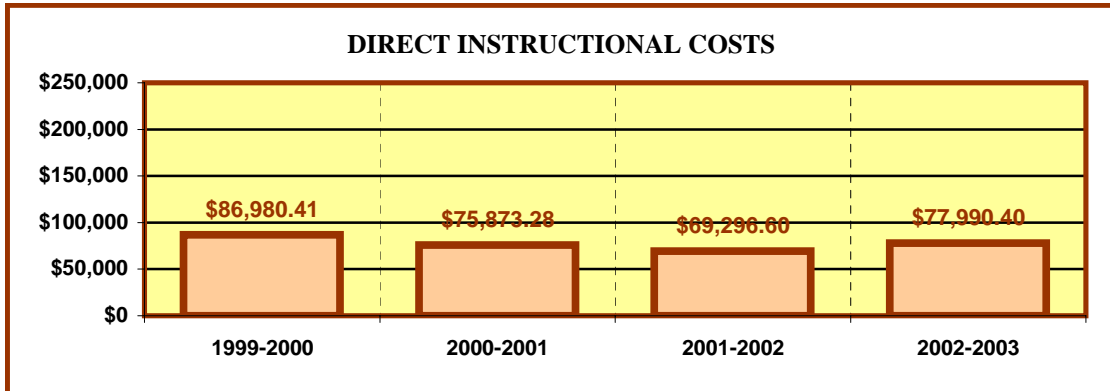


INTERPRETER TRAINING (SLNG)				
	1999-2000	2000-2001	2001-2002	2002-2003
EXPENDITURES	\$ 97,213.40	\$ 84,172.10	\$ 78,228.13	\$ 87,395.30
REIMBURSEMENT	\$ 83,620.96	\$ 52,711.68	\$ 49,950.88	\$ 47,664.64

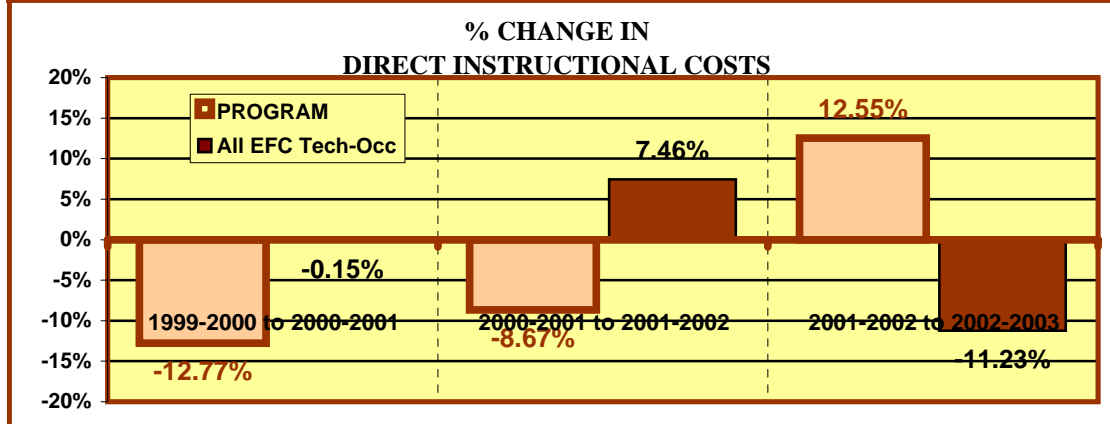


All EFC Tech-Occ				
	1999-2000	2000-2001	2001-2002	2002-2003
EXPENDITURES	\$ 3,332,156.16	\$ 3,512,521.98	\$ 3,698,810.13	\$ 3,351,908.70
REIMBURSEMENT	\$ 3,879,822.76	\$ 4,199,497.60	\$ 3,762,235.68	\$ 3,778,124.48

**EASTFIELD COLLEGE
TECHNICAL PROGRAM REVIEW
ACADEMIC YEAR 2002 - 2003**



	DIRECT INSTRUCTIONAL COSTS			
	1999-2000	2000-2001	2001-2002	2002-2003
Program	\$ 86,980.41	\$ 75,873.28	\$ 69,296.60	\$ 77,990.40
All EFC Tech-Occ	\$ 2,603,429.71	\$ 2,599,648.71	\$ 2,793,602.31	\$ 2,479,846.05



	% CHANGE IN DIRECT INSTRUCT. COSTS		
	1999-2000 to 2000-2001	2000-2001 to 2001-2002	2001-2002 to 2002-2003
PROGRAM	-12.77%	-8.67%	12.55%
All EFC Tech-Occ	-0.15%	7.46%	-11.23%

FINANCIAL INDICATORS

FALL, 2002 PROGRAM/DISCIPLINE (CostCenter) Reimbursement to Cost Center Expenses is positive in					
2002-2003		BOTH 2002-2003 & 2001-2002		3 OF LAST 4 YEARS	
YES/NO	Score	YES/NO	Score	YES/NO	Score
NO	0	NO	0	NO	0
DIRECT INSTRUCTIONAL COSTS DECREASED BETWEEN:					
2001-2002 & 2002-2003		1999-2000 & 2002-2003		BOTH 01-02 & 02-03 AND 00-01 & 01-02	
YES/NO	Score	YES/NO	Score	YES/NO	Score
NO	0	YES	3	NO	0
INSTRUCTIONAL COSTS DECREASED MORE THAN EFC TECH 01-02 TO 02-03			SCORE OF A POSSIBLE 21 POINT TOTAL		
YES/NO	Score	SCORE		%	
NO	0	3		14.3%	
OVERALL REVIEW TOTAL OF POSSIBLE 90 POINTS					
			SCORE	%	
			24	26.7%	