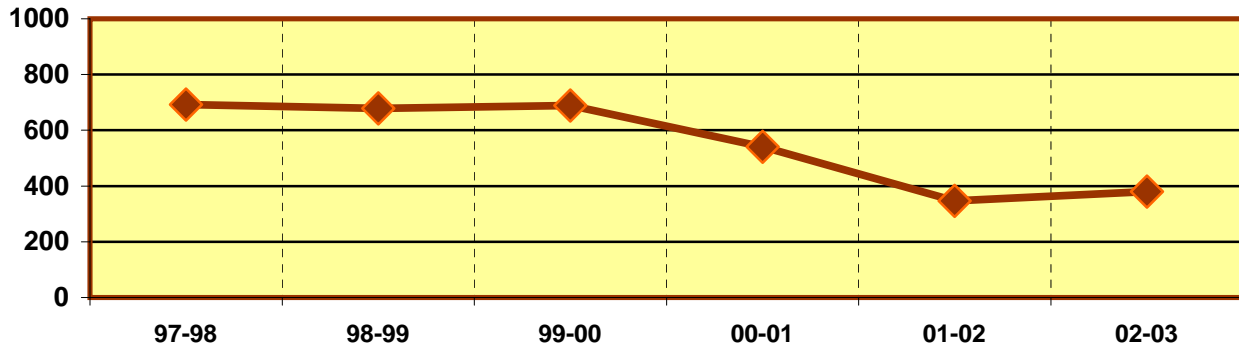


**EASTFIELD COLLEGE  
PROGRAM/DISCIPLINE REVIEW DATA SHEET  
TECHNICAL PROGRAM LEVEL - ACADEMIC YEAR 2002 - 2003**

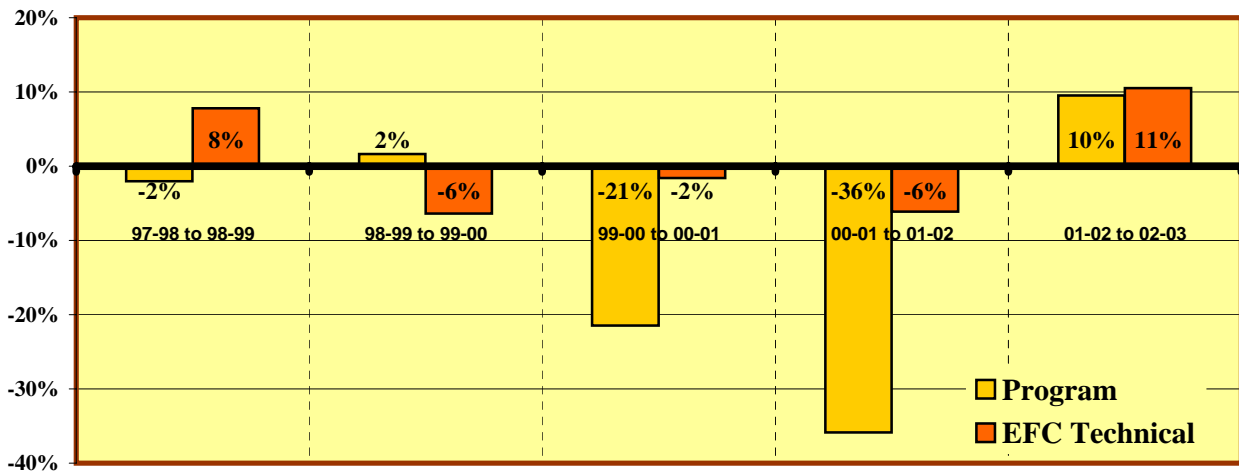
**OFFICE TECHNOLOGY (POFT/POFI)**

**PROGRAM ENROLLMENT**



	Enrollments					
	97-98	98-99	99-00	00-01	01-02	02-03
<b>Program</b>	692	678	689	541	347	380
<b>All Tech-Occ Programs</b>	11,345	12,228	11,442	11,255	10,571	11,678

**% Change in Enrollment**



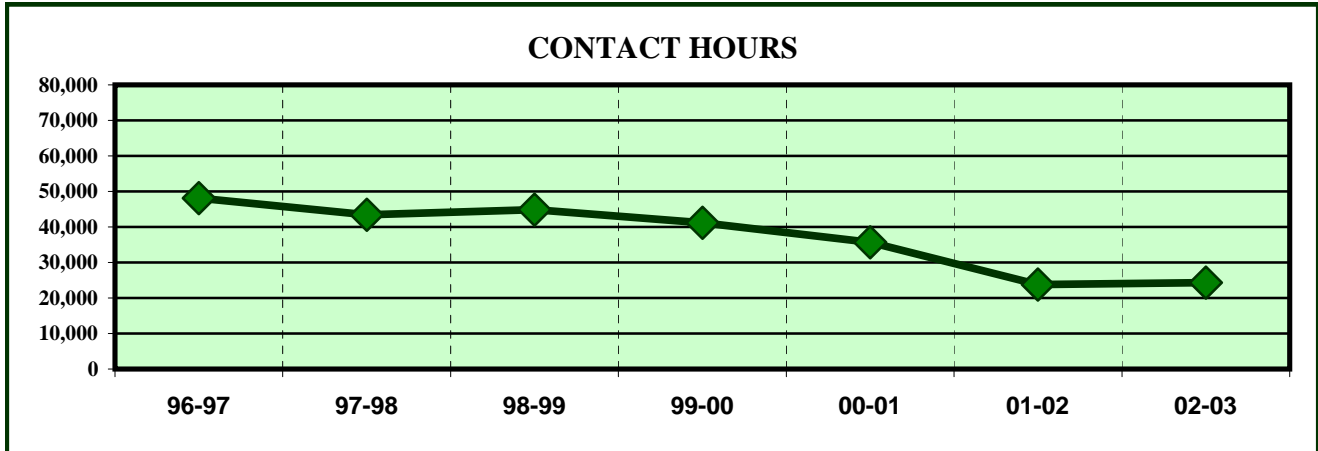
	% Change				
	97-98 to 98-99	98-99 to 99-00	99-00 to 00-01	00-01 to 01-02	01-02 to 02-03
<b>Program</b>	-2.0%	1.6%	-21.5%	-35.9%	9.5%
<b>All Tech-Occ Programs</b>	7.8%	-6.4%	-1.6%	-6.1%	10.5%

**ENROLLMENT INDICATORS**

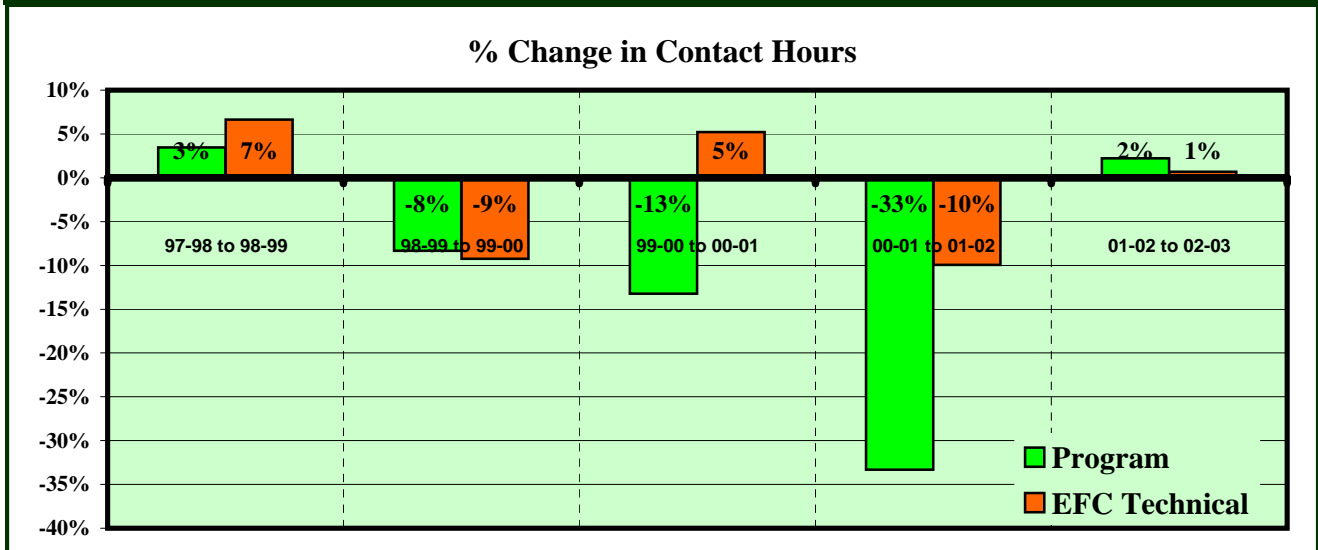
	% Change Comparisons			Program Decreases?			Down more than all Tech-Oc?*			
	5 year	3 year	1 year	In	YES/NO	Score	For	YES/NO	Score	
<b>Program</b>	-9.0%	-15.0%	9.5%	5 of 5 yrs	NO	5	5 yr avg.	YES	0	
<b>All Tech-OC</b>	0.6%	0.7%	10.5%	4 of 5 yrs	NO	5	3 yr avg.	YES	1	
				Last 3 of 5 yrs	NO	5	1 yr avg.	YES	3	
<b>*OR UP LESS THAN</b>							<b>OF POSSIBLE 30 POINT TOTAL</b>		<b>19</b>	<b>63.3%</b>

**EASTFIELD COLLEGE**  
**PROGRAM/DISCIPLINE REVIEW TECHNICAL PROGRAM LEVEL**  
**ACADEMIC YEAR 2002 - 2003**

**OFFICE TECHNOLOGY (POFT/POFI)**



	CONTACT HOURS						
	96-97	97-98	98-99	99-00	00-01	01-02	02-03
<b>Program</b>	48,144	43,392	44,896	41,152	35,712	23,808	24,336
<b>All Tech-Occ Programs</b>	991,664	980,976	1,046,208	949,316	998,828	899,536	905,696

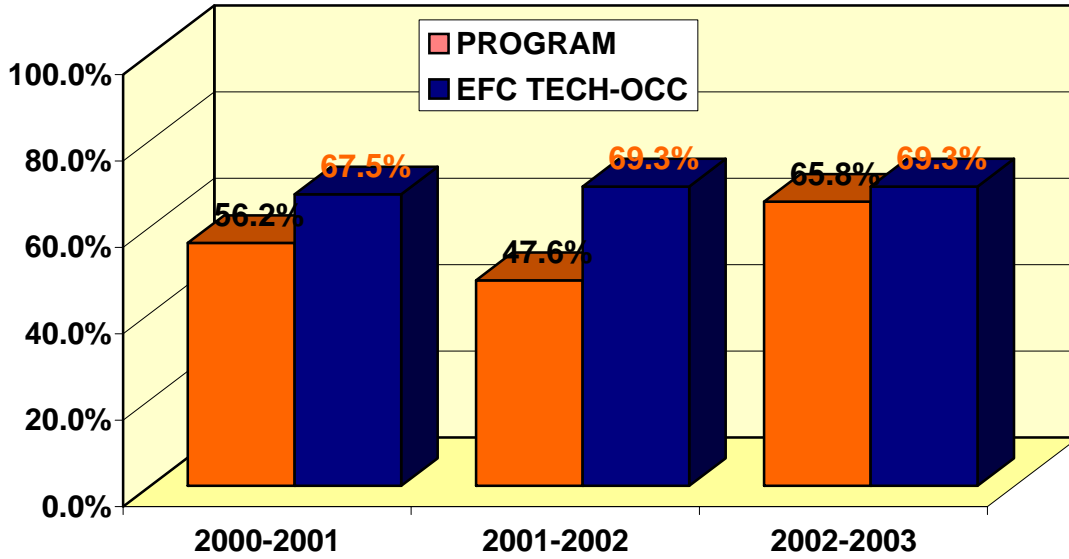


	% Change					
	96-97 to 97-98	97-98 to 98-99	98-99 to 99-00	99-00 to 00-01	00-01 to 01-02	01-02 to 02-03
<b>Program</b>	-9.9%	3.5%	-8.3%	-13.2%	-33.3%	2.2%
<b>All Tech-Occ Programs</b>	-1.1%	6.6%	-9.3%	5.2%	-9.9%	0.7%

**CONTACT HOUR INDICATORS**

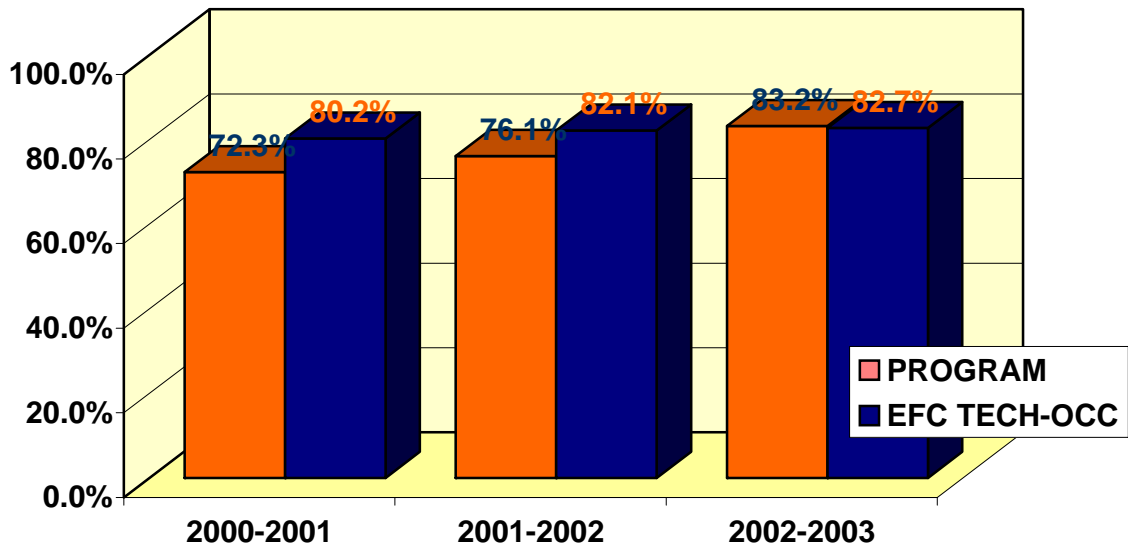
	% Change Comparisons			Program Decreases?			Down more than Tech-Occ?*			
	5 year	3 year	1 year	In	YES/NO	Score	For	YES/NO	Score	
<b>Program</b>	-10.2%	-13.6%	2.2%	5 of 5 yrs	NO	5	5 yr avg.	YES	0	
<b>All Tech-OC</b>	-1.7%	-1.5%	0.7%	4 of 5 yrs	NO	5	3 yr avg.	YES	1	
				Last 3 of 5 yrs	NO	5	1 yr avg.	NO	5	
<b>*OR UP LESS THAN</b>							<b>OF POSSIBLE 30 POINT TOTAL</b>		<b>21</b>	<b>70.0%</b>

**CLASSROOM SUCCESS  
 OFFICE TECHNOLOGY (POFT/POFI)**



**% OF STUDENTS RECEIVING A, B OR C IN PROGRAM COURSES**

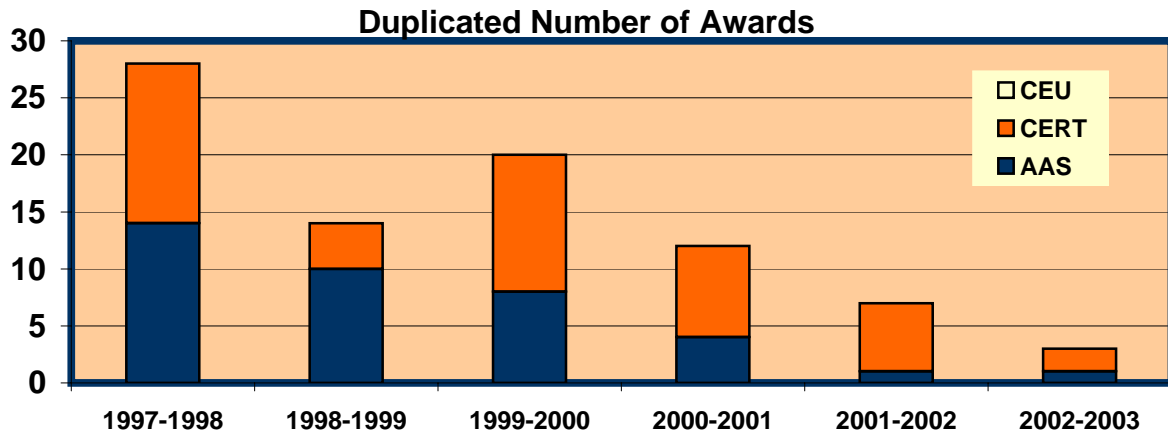
	2000-2001	2001-2002	2002-2003
PROGRAM	56.2%	47.6%	65.8%
EFC-TECH	67.5%	69.3%	69.3%



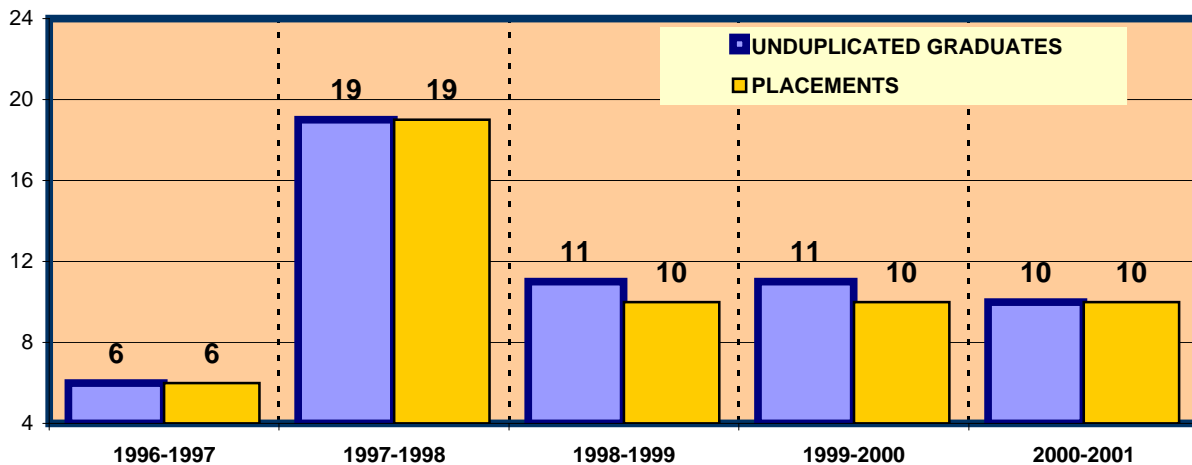
**% COURSE COMPLETION FOR PROGRAM**

	2000-2001	2001-2002	2002-2003
PROGRAM	72.3%	76.1%	83.2%
EFC-TECH	80.2%	82.1%	82.7%

## STUDENT OUTCOMES SUCCESS OFFICE TECHNOLOGY (POFT/POFI)



	1997-1998	1998-1999	1999-2000	2000-2001	2001-2002	2002-2003
<b>AAS</b>	14	10	8	4	1	1
<b>CERT</b>	14	4	12	8	6	2
<b>CEU</b>	0	0	0	0	0	0
<b>PROGRAM TOTAL</b>	28	14	20	12	7	3



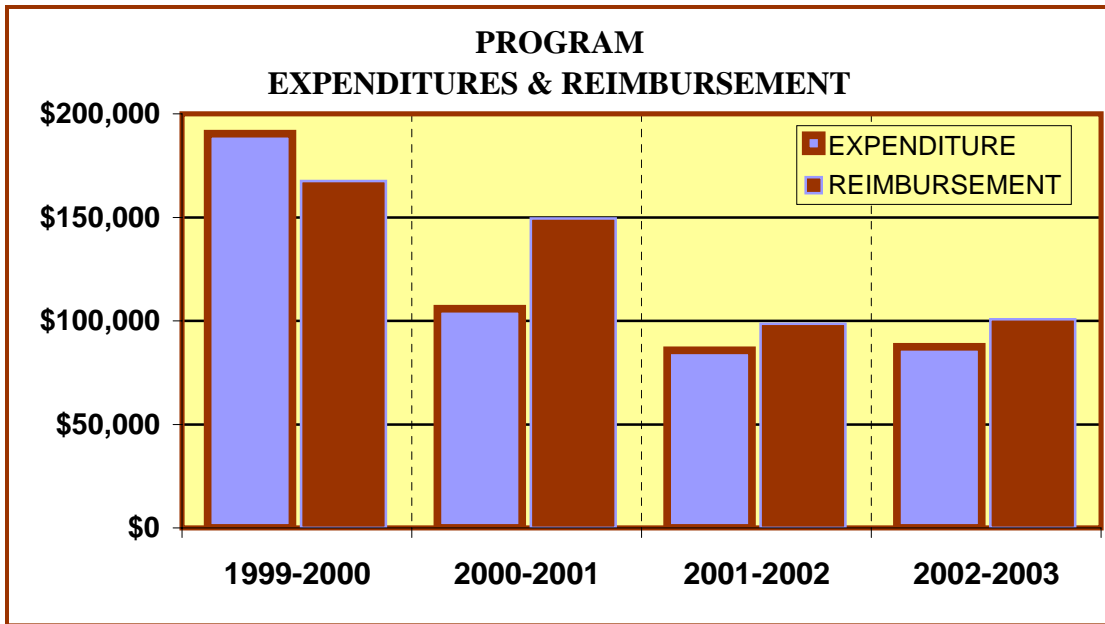
### PROGRAM PLACEMENTS

	1996-1997	1997-1998	1998-1999	1999-2000	2000-2001	2001-2002
<b>Unduplicated Grads</b>	6	19	11	11	10	
<b>Placements</b>	6	19	10	10	10	
<b>Program Percentage</b>	100.0%	100.0%	90.9%	90.9%	100.0%	

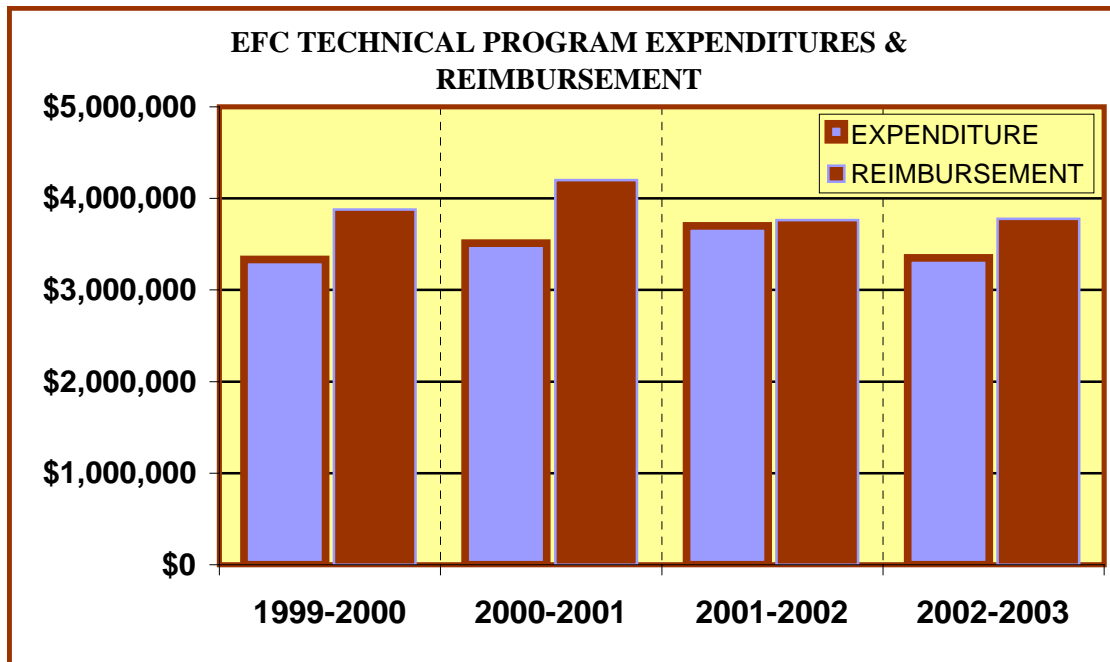
### SUCCESS INDICATORS

Completion Rate Over %75			Percent of A, B, & C Grades More than 50%			TECH SCORE OUT OF POSSIBLE 12 POINT SCORE	
In	YES/NO	Score	In	YES/NO	Score		
2002-2003	YES	3	2002-2003	YES	3	#	%
<b>PLACEMENT Over %75</b>			<b>Technical Program Awards 15 Or More Over 3 Years</b>			12	100%
In	YES/NO	Score	In	YES/NO	Score		
2000-2001	YES	3	2002-2003	YES	3		

**EASTFIELD COLLEGE  
TECHNICAL PROGRAM REVIEW  
ACADEMIC YEAR 2002 - 2003**

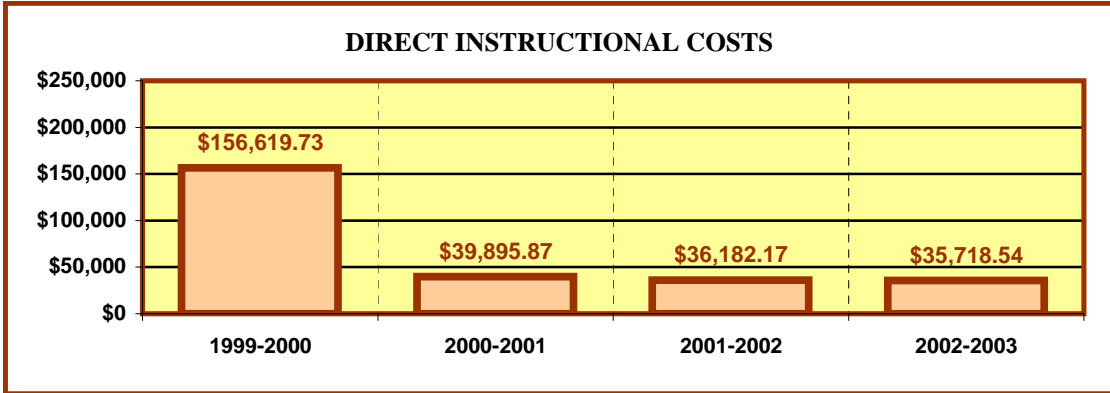


<b>OFFICE TECHNOLOGY (POFT/POFI)</b>				
	1999-2000	2000-2001	2001-2002	2002-2003
<b>EXPENDITURES</b>	\$ 190,349.95	\$ 105,940.37	\$ 85,849.23	\$ 87,541.57
<b>REIMBURSEMENT</b>	\$ 167,488.64	\$ 149,488.64	\$ 98,565.12	\$ 100,751.04

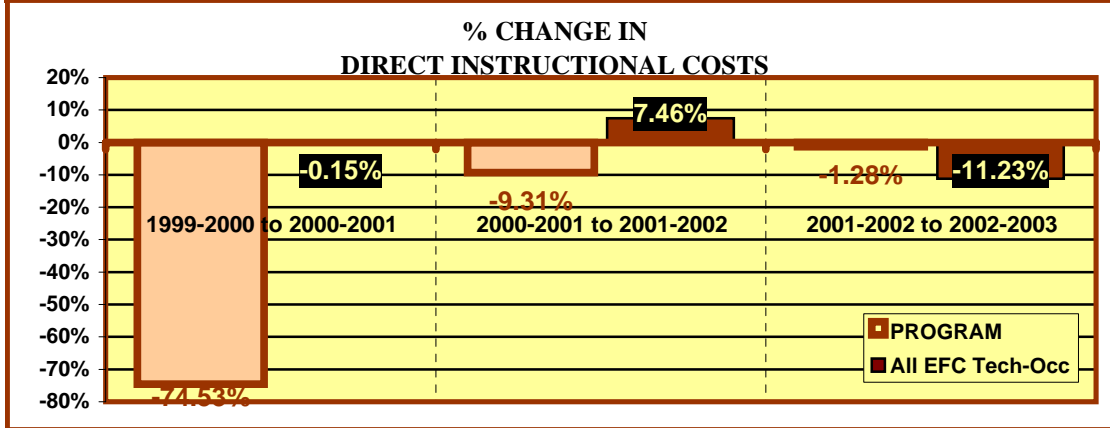


<b>All EFC Tech-Occ</b>				
	1999-2000	2000-2001	2001-2002	2002-2003
<b>EXPENDITURES</b>	\$ 3,332,156.16	\$ 3,512,521.98	\$ 3,698,810.13	\$ 3,351,908.70
<b>REIMBURSEMENT</b>	\$ 3,879,822.76	\$ 4,199,497.60	\$ 3,762,235.68	\$ 3,778,124.48

**EASTFIELD COLLEGE  
TECHNICAL PROGRAM REVIEW  
ACADEMIC YEAR 2002 - 2003**



	DIRECT INSTRUCTIONAL COSTS			
	1999-2000	2000-2001	2001-2002	2002-2003
Program	\$ 156,619.73	\$ 39,895.87	\$ 36,182.17	\$ 35,718.54
All EFC Tech-Occ	\$ 2,603,429.71	\$ 2,599,648.71	\$ 2,793,602.31	\$ 2,479,846.05



	% CHANGE IN DIRECT INSTRUCT. COSTS		
	1999-2000 to 2000-2001	2000-2001 to 2001-2002	2001-2002 to 2002-2003
PROGRAM	-74.53%	-9.31%	-1.28%
All EFC Tech-Occ	-0.15%	7.46%	-11.23%

**FINANCIAL INDICATORS**

FALL, 2002 PROGRAM/DISCIPLINE (CostCenter) Reimbursement to Cost Center Expenses is positive in					
2002-2003		BOTH 2002-2003 & 2001-2002		3 OF LAST 4 YEARS	
YES/NO	Score	YES/NO	Score	YES/NO	Score
YES	3	YES	3	YES	3
DIRECT INSTRUCTIONAL COSTS DECREASED BETWEEN:					
2001-2002 & 2002-2003		1999-2000 & 2002-2003		BOTH 01-02 & 02-03 AND 00-01 & 01-02	
YES/NO	Score	YES/NO	Score	YES/NO	Score
YES	3	YES	3	YES	3
INSTRUCTIONAL COSTS DECREASED MORE THAN EFC TECH 01-02 TO 02-03			SCORE OF A POSSIBLE 21 POINT TOTAL		
YES/NO	Score	SCORE		%	
NO	0	18		85.7%	
OVERALL REVIEW TOTAL OF POSSIBLE 93 POINTS					
			SCORE		%
			70		75.3%