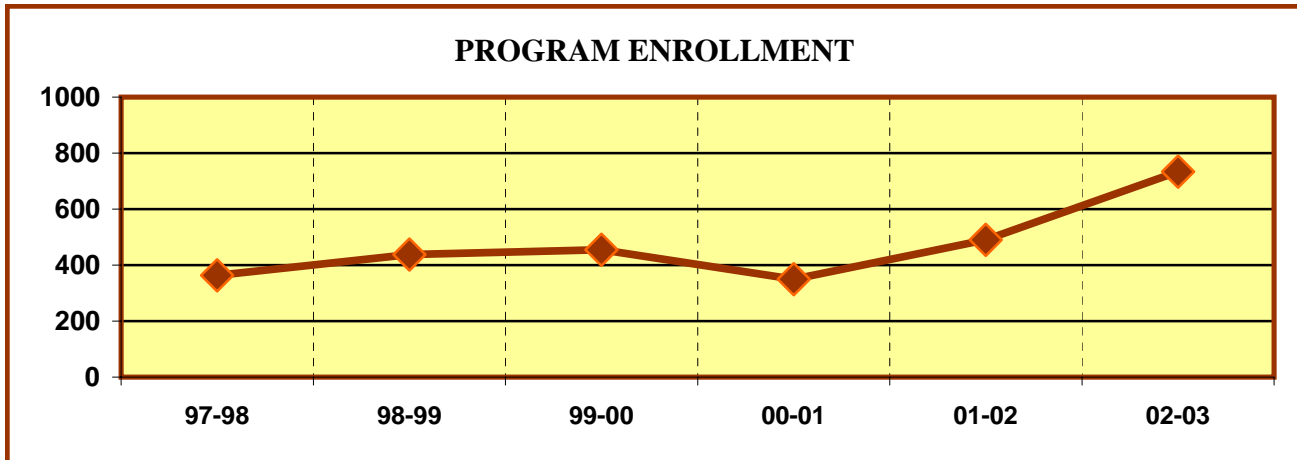
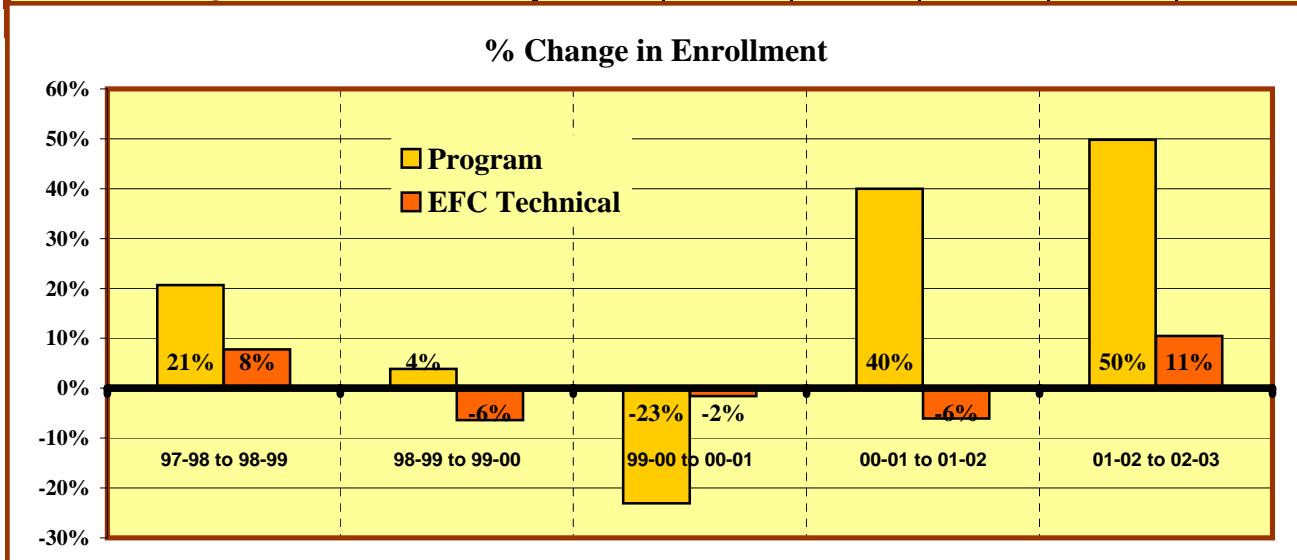


**EASTFIELD COLLEGE  
PROGRAM/DISCIPLINE REVIEW DATA SHEET  
TECHNICAL PROGRAM LEVEL - ACADEMIC YEAR 2002 - 2003**

**AIR CONDITIONING & REFRIGERATION**



	Enrollments					
	97-98	98-99	99-00	00-01	01-02	02-03
<b>Program</b>	363	438	455	350	490	734
<b>All Tech-Occ Programs</b>	11,345	12,228	11,442	11,255	10,571	11,678



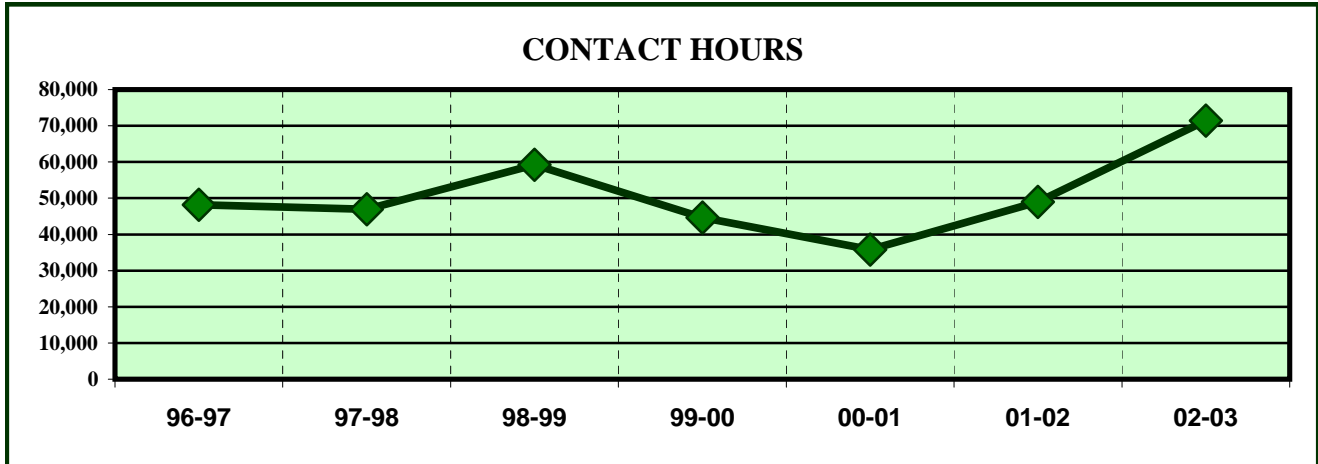
	% Change				
	97-98 to 98-99	98-99 to 99-00	99-00 to 00-01	00-01 to 01-02	01-02 to 02-03
<b>Program</b>	20.7%	3.9%	-23.1%	40.0%	49.8%
<b>All Tech-Occ Programs</b>	7.8%	-6.4%	-1.6%	-6.1%	10.5%

**ENROLLMENT INDICATORS**

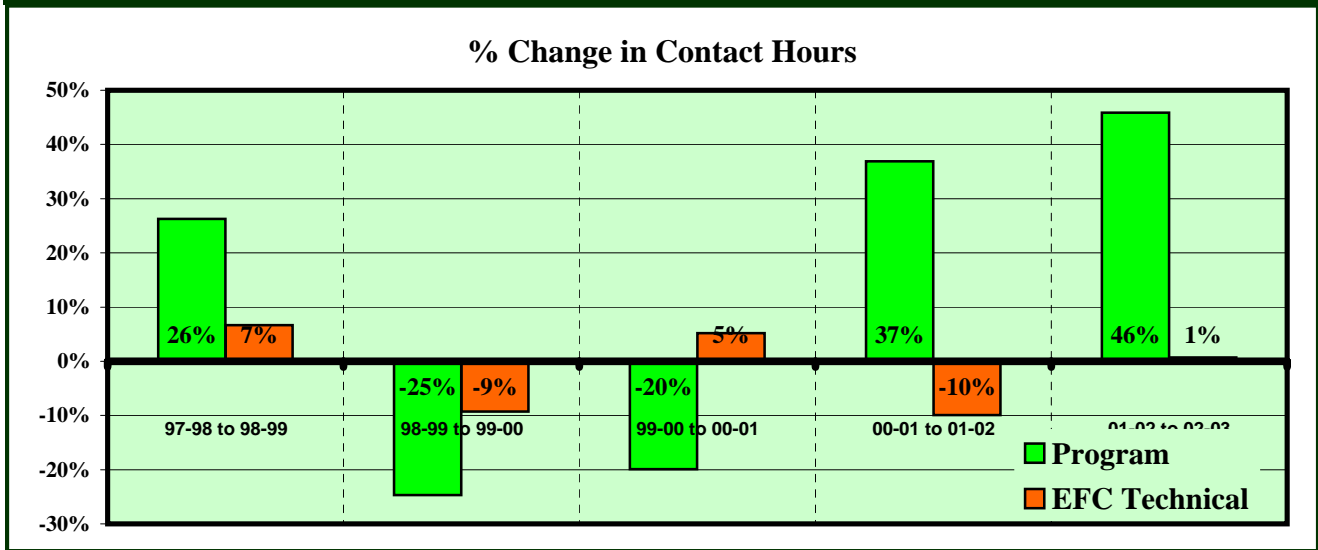
	% Change Comparisons			Program Decreases?			Down more than all Tech-Oc?			
	5 year	3 year	1 year	In	YES/NO	Score	For	YES/NO	Score	
<b>Program</b>	20.4%	20.4%	49.8%	5 of 5 yrs	NO	5	5 yr avg.	NO	5	
<b>All Tech-OC</b>	0.6%	0.7%	10.5%	4 of 5 yrs	NO	5	3 yr avg.	NO	5	
				Last 3 of 5 yrs	NO	5	1 yr avg.	NO	5	
<b>*OR UP LESS THAN</b>							<b>OF POSSIBLE 30 POINT TOTAL</b>		<b>30</b>	<b>100.0%</b>

**EASTFIELD COLLEGE**  
**PROGRAM/DISCIPLINE REVIEW TECHNICAL PROGRAM LEVEL**  
**ACADEMIC YEAR 2002 - 2003**

**AIR CONDITIONING & REFRIGERATION**



	CONTACT HOURS						
	96-97	97-98	98-99	99-00	00-01	01-02	02-03
<b>Program</b>	48,144	46,928	59,264	44,640	35,760	48,960	71,424
<b>All Tech-Occ Programs</b>	991,664	980,976	1,046,208	949,316	998,828	899,536	905,696



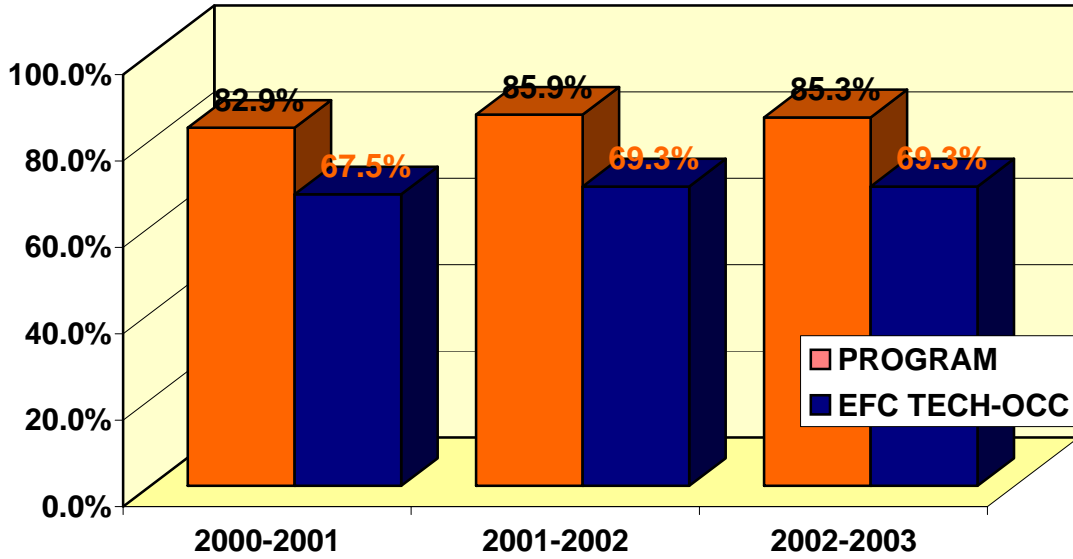
	% Change					
	96-97 to 97-98	97-98 to 98-99	98-99 to 99-00	99-00 to 00-01	00-01 to 01-02	01-02 to 02-03
<b>Program</b>	-2.5%	26.3%	-24.7%	-19.9%	36.9%	45.9%
<b>All Tech-Occ Programs</b>	-1.1%	6.6%	-9.3%	5.2%	-9.9%	0.7%

**CONTACT HOUR INDICATORS**

	% Change Comparisons			Program Decreases?			Down more than Tech-Occ?		
	5 year	3 year	1 year	In	YES/NO	Score	For	YES/NO	Score
<b>Program</b>	6.1%	20.0%	45.9%	5 of 5 yrs	NO	5	5 yr avg.	NO	5
<b>All Tech-OC</b>	-1.7%	-1.5%	0.7%	4 of 5 yrs	NO	5	3 yr avg.	NO	5
				Last 3 of 5 yrs	NO	5	1 yr avg.	NO	5
				<b>OF POSSIBLE 30 POINT TOTAL</b>			<b>30</b>		<b>100.0%</b>

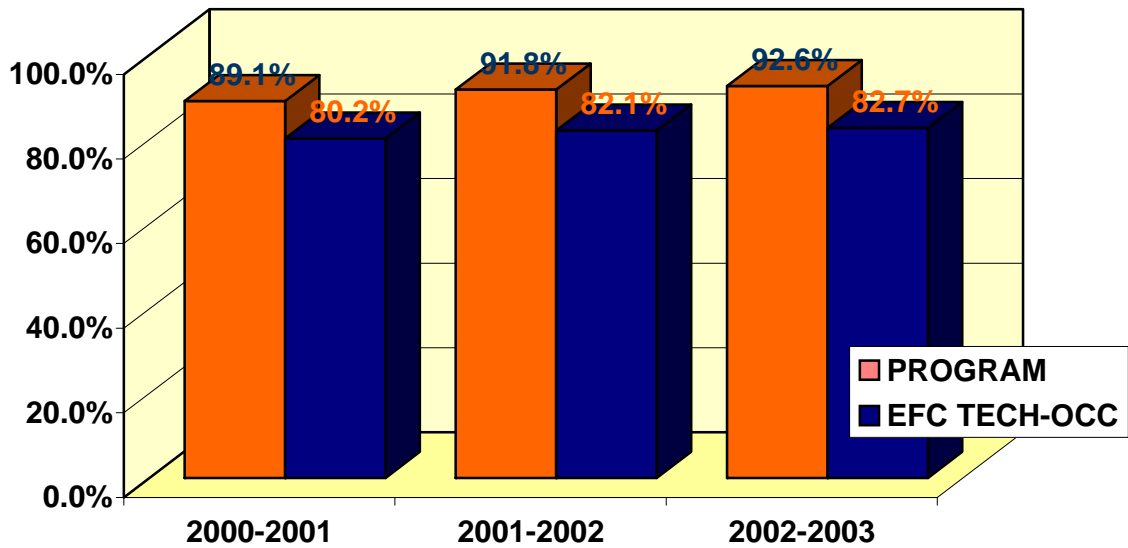
\*OR UP LESS THAN

**CLASSROOM SUCCESS**  
**AIR CONDITIONING & REFRIGERATION**



**% OF STUDENTS RECEIVING A, B OR C IN PROGRAM COURSES**

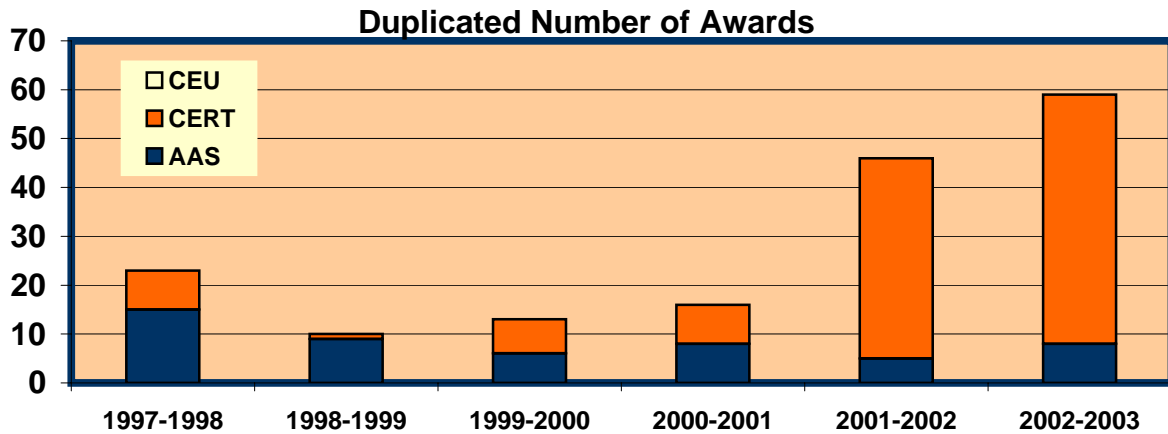
	2000-2001	2001-2002	2002-2003
PROGRAM	82.9%	85.9%	85.3%
EFC-TECH	67.5%	69.3%	69.3%



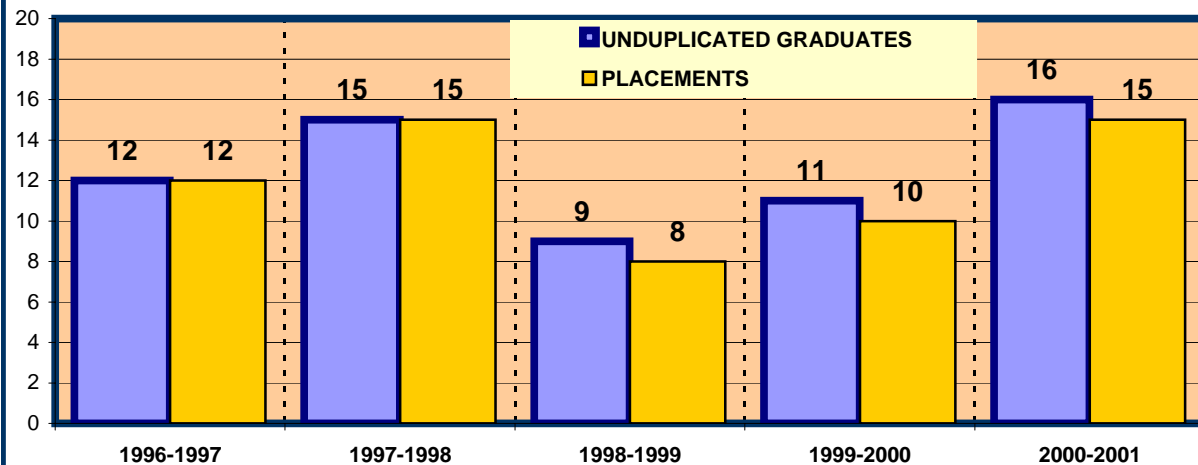
**% COURSE COMPLETION FOR PROGRAM**

	2000-2001	2001-2002	2002-2003
PROGRAM	89.1%	91.8%	92.6%
EFC-TECH	80.2%	82.1%	82.7%

## STUDENT OUTCOMES SUCCESS AIR CONDITIONING & REFRIGERATION



	1997-1998	1998-1999	1999-2000	2000-2001	2001-2002	2002-2003
<b>AAS</b>	15	9	6	8	5	8
<b>CERT</b>	8	1	7	8	41	51
<b>CEU</b>	0	0	0	0	0	0
<b>PROGRAM TOTAL</b>	23	10	13	16	46	59



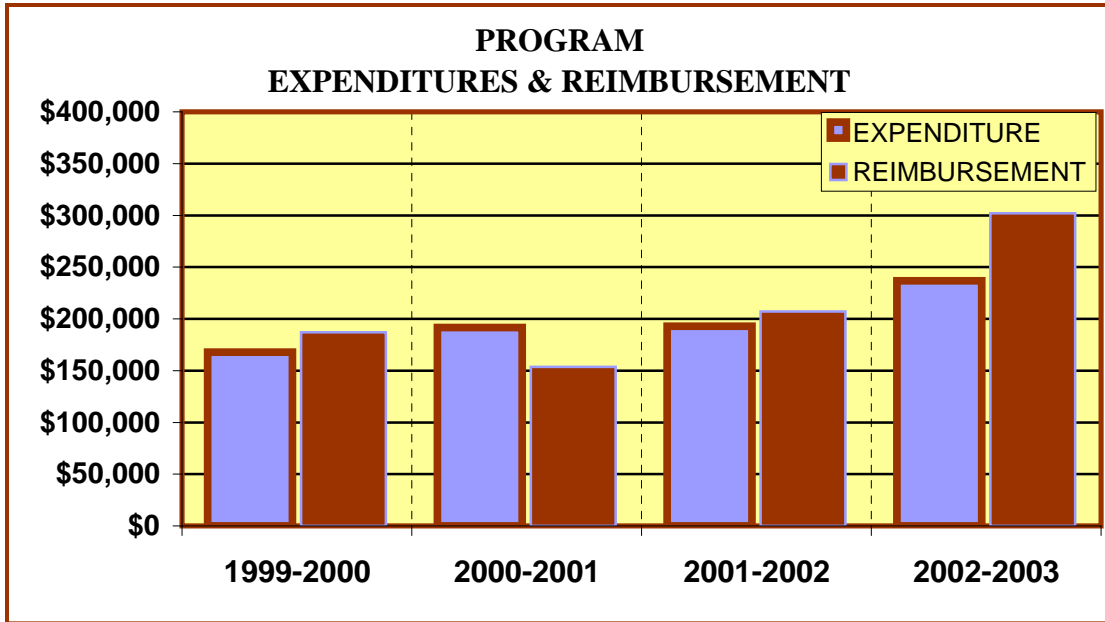
### PROGRAM PLACEMENTS

	1996-1997	1997-1998	1998-1999	1999-2000	2000-2001	2001-2002
<b>Unduplicated Grads</b>	12	15	9	11	16	
<b>Placements</b>	12	15	8	10	15	
<b>Program Percentage</b>	100.0%	100.0%	88.9%	90.9%	93.8%	

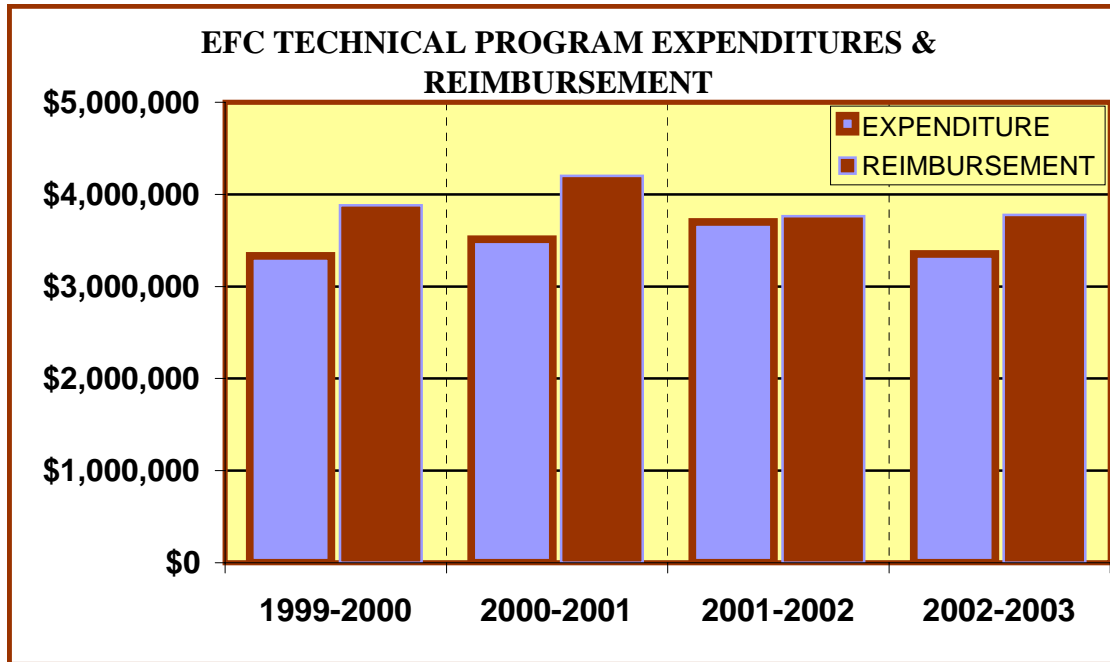
### SUCCESS INDICATORS

Completion Rate Over %75			Percent of A, B, & C Grades More than 50%			TECH SCORE OUT OF POSSIBLE 12 POINT SCORE	
In	YES/NO	Score	In	YES/NO	Score		
2002-2003	YES	3	2002-2003	YES	3	#	%
<b>PLACEMENT Over %75</b>			<b>Technical Program Awards 15 Or More Over 3 Years</b>			12	100%
In	YES/NO	Score	In	YES/NO	Score		
2000-2001	YES	3	2002-2003	YES	3		

**EASTFIELD COLLEGE  
TECHNICAL PROGRAM REVIEW  
ACADEMIC YEAR 2002 - 2003**

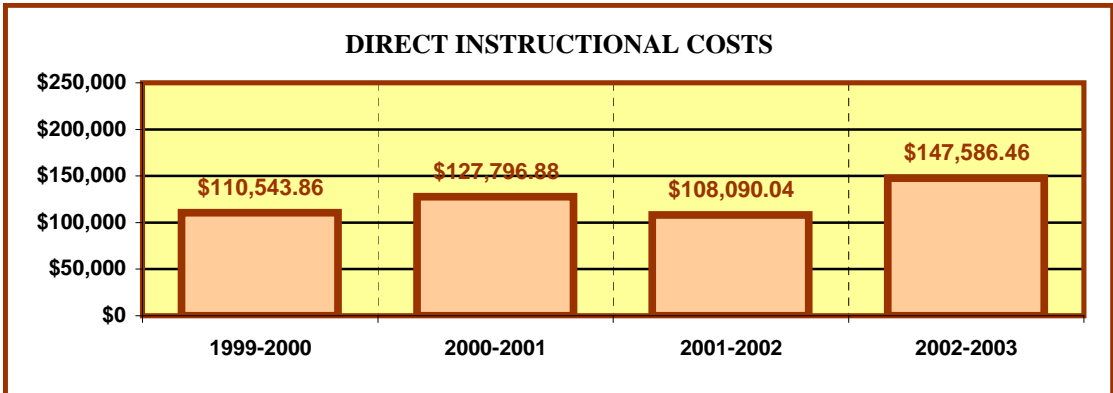


<b>AIR CONDITIONING &amp; REFRIGERATION</b>				
	1999-2000	2000-2001	2001-2002	2002-2003
<b>EXPENDITURES</b>	\$ 167,814.89	\$ 191,606.41	\$ 192,901.75	\$ 236,661.91
<b>REIMBURSEMENT</b>	\$ 187,041.60	\$ 153,768.00	\$ 207,100.80	\$ 302,123.52

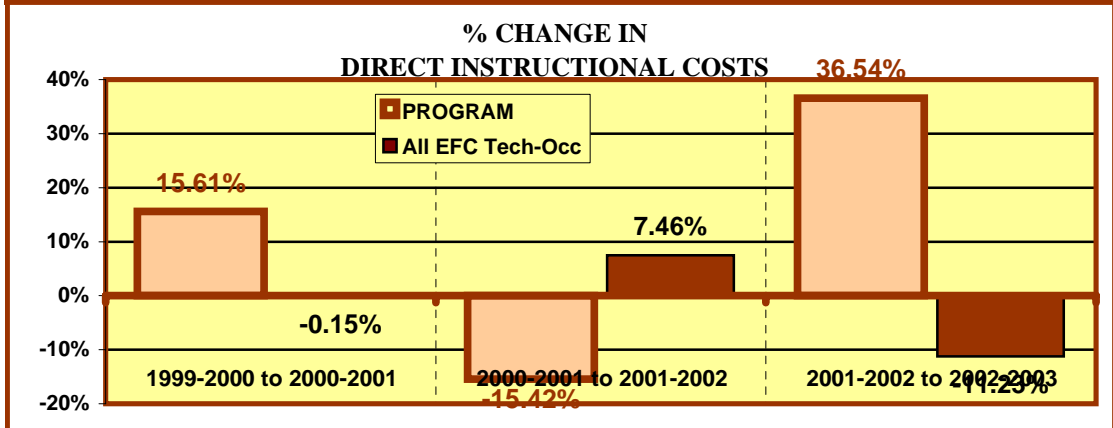


<b>All EFC Tech-Occ</b>				
	1999-2000	2000-2001	2001-2002	2002-2003
<b>EXPENDITURES</b>	\$ 3,332,156.16	\$ 3,512,521.98	\$ 3,698,810.13	\$ 3,351,908.70
<b>REIMBURSEMENT</b>	\$ 3,879,822.76	\$ 4,199,497.60	\$ 3,762,235.68	\$ 3,778,124.48

**EASTFIELD COLLEGE  
TECHNICAL PROGRAM REVIEW  
ACADEMIC YEAR 2002 - 2003**



	DIRECT INSTRUCTIONAL COSTS			
	1999-2000	2000-2001	2001-2002	2002-2003
Program	\$ 110,543.86	\$ 127,796.88	\$ 108,090.04	\$ 147,586.46
All EFC Tech-Occ	\$ 2,603,429.71	\$ 2,599,648.71	\$ 2,793,602.31	\$ 2,479,846.05



	% CHANGE IN DIRECT INSTRUCT. COSTS		
	1999-2000 to 2000-2001	2000-2001 to 2001-2002	2001-2002 to 2002-2003
PROGRAM	15.61%	-15.42%	36.54%
All EFC Tech-Occ	-0.15%	7.46%	-11.23%

**FINANCIAL INDICATORS**

FALL, 2002 PROGRAM/DISCIPLINE (CostCenter) Reimbursement to Cost Center Expenses is positive in					
2002-2003		BOTH 2002-2003 & 2001-2002		3 OF LAST 4 YEARS	
YES/NO	Score	YES/NO	Score	YES/NO	Score
YES	3	YES	3	YES	3
DIRECT INSTRUCTIONAL COSTS DECREASED BETWEEN:					
2001-2002 & 2002-2003		1999-2000 & 2002-2003		BOTH 01-02 & 02-03 AND 00-01 & 01-02	
YES/NO	Score	YES/NO	Score	YES/NO	Score
NO	0	NO	0	NO	0
INSTRUCTIONAL COSTS DECREASED MORE THAN EFC TECH 01-02 TO 02-03			SCORE OF A POSSIBLE 21 POINT TOTAL		
YES/NO	Score	SCORE		%	
NO	0	9		42.9%	
OVERALL REVIEW TOTAL OF POSSIBLE 93 POINTS					
			SCORE	%	
			81	87.1%	