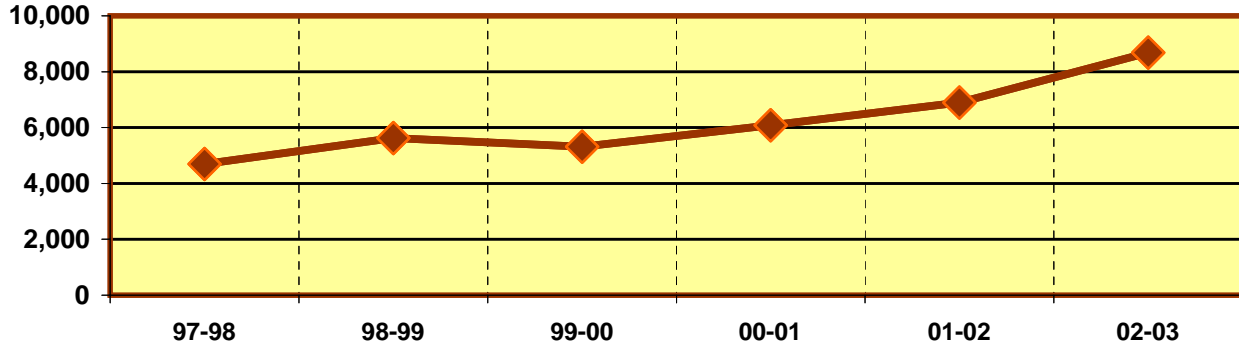


**EASTFIELD COLLEGE
PROGRAM/DISCIPLINE REVIEW DATA SHEET
ACADEMIC YEAR 2002 - 2003**

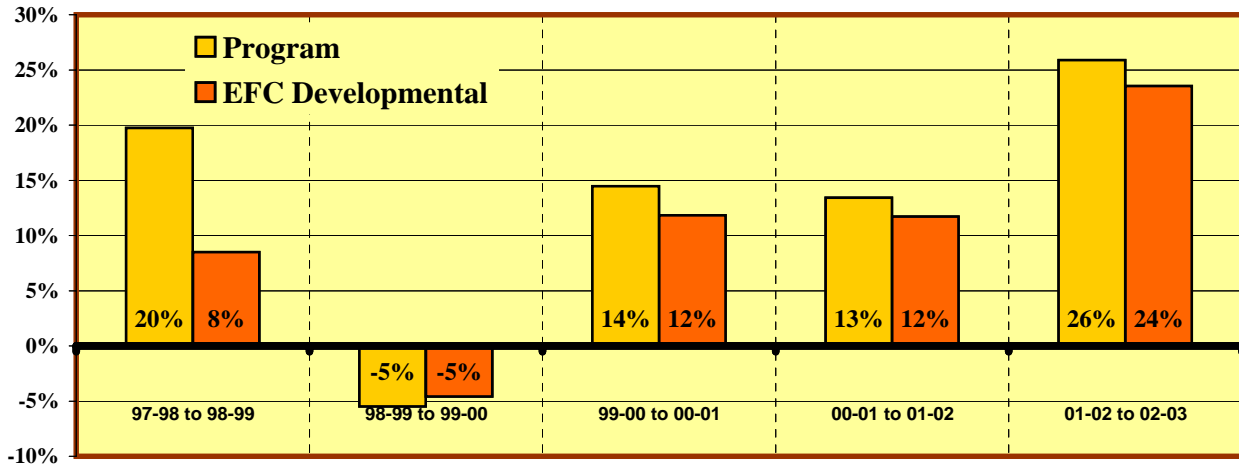
DEVELOPMENTAL MATHEMATICS

PROGRAM ENROLLMENT



	Enrollments					
	97-98	98-99	99-00	00-01	01-02	02-03
Program	4,694	5,621	5,313	6,082	6,899	8,685
All EFC Developmental Programs	7,174	7,783	7,426	8,305	9,278	11,461

% Change in Enrollment



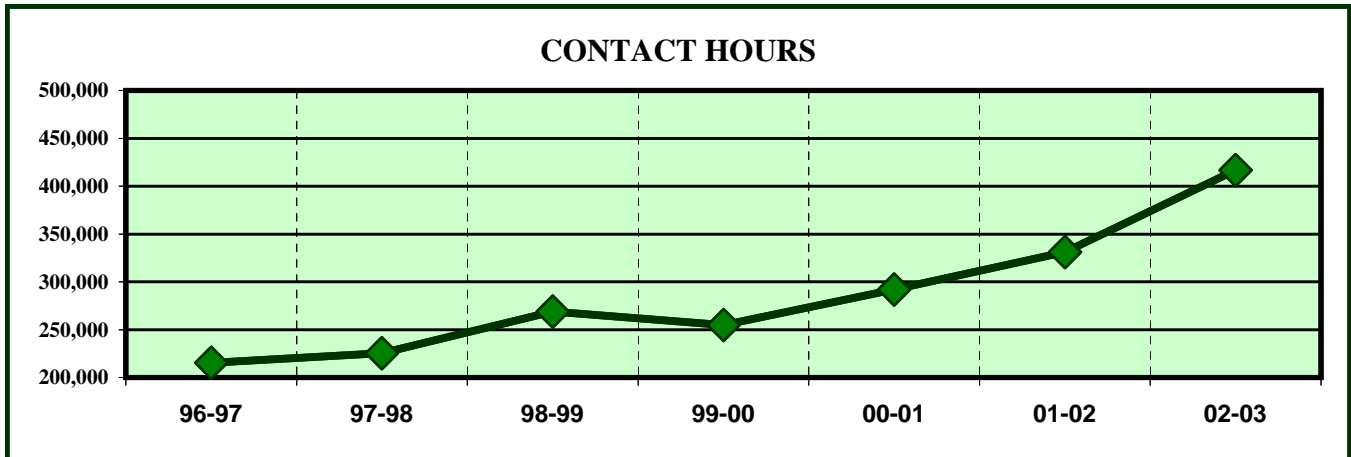
	% Change				
	97-98 to 98-99	98-99 to 99-00	99-00 to 00-01	00-01 to 01-02	01-02 to 02-03
Program	19.7%	-5.5%	14.5%	13.4%	25.9%
All EFC Developmental Programs	8.5%	-4.6%	11.8%	11.7%	23.5%

ENROLLMENT INDICATORS

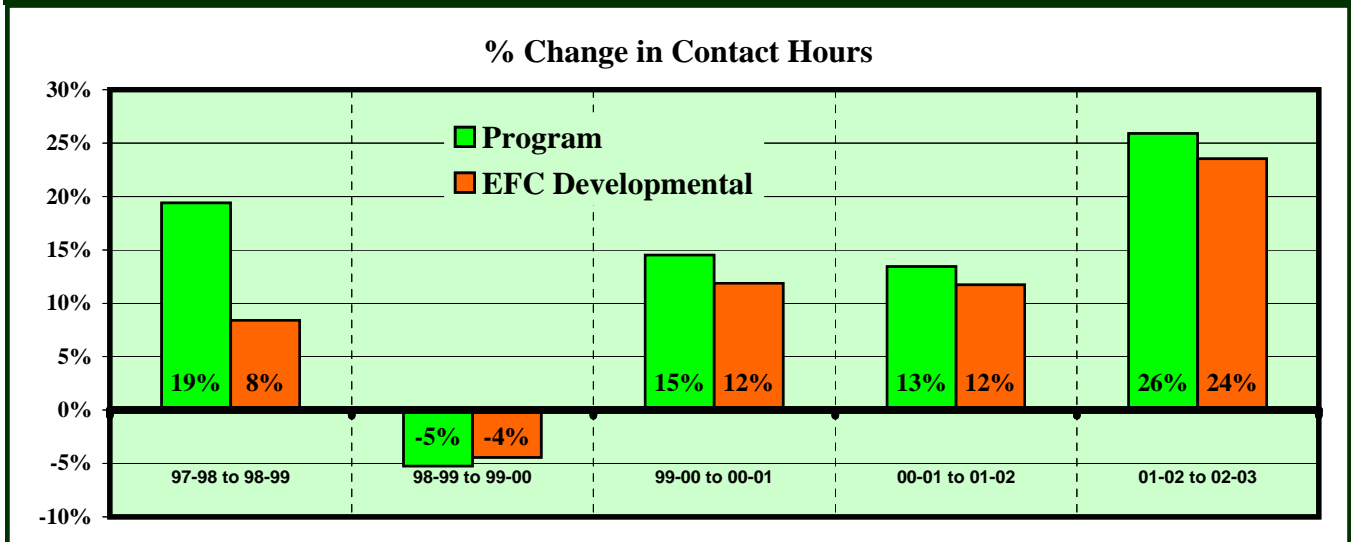
	% Change Comparisons			Program Decreases?			Down more or increase less than all Developmental Programs?		
	5 year	3 year	1 year	In	YES/NO	Score	For	YES/NO	Score
	Program	17.0%	21.2%	25.9%	5 of 5 yrs	NO	5	5 yr avg.	NO
All DEV	6.4%	18.1%	23.5%	4 of 5 yrs	NO	5	3 yr avg.	NO	5
				Last 3 of 5 yrs	NO	5	1 yr avg.	NO	5
OF POSSIBLE 30 POINT TOTAL							30	100.0%	

**EASTFIELD COLLEGE
PROGRAM/DISCIPLINE REVIEW
ACADEMIC YEAR 2002 - 2003**

DEVELOPMENTAL MATHEMATICS



	CONTACT HOURS						
	96-97	97-98	98-99	99-00	00-01	01-02	02-03
Program	215,472	225,312	269,008	254,924	291,936	331,152	416,880
All Developmental Programs	317,872	343,888	372,784	356,300	398,640	445,344	550,128



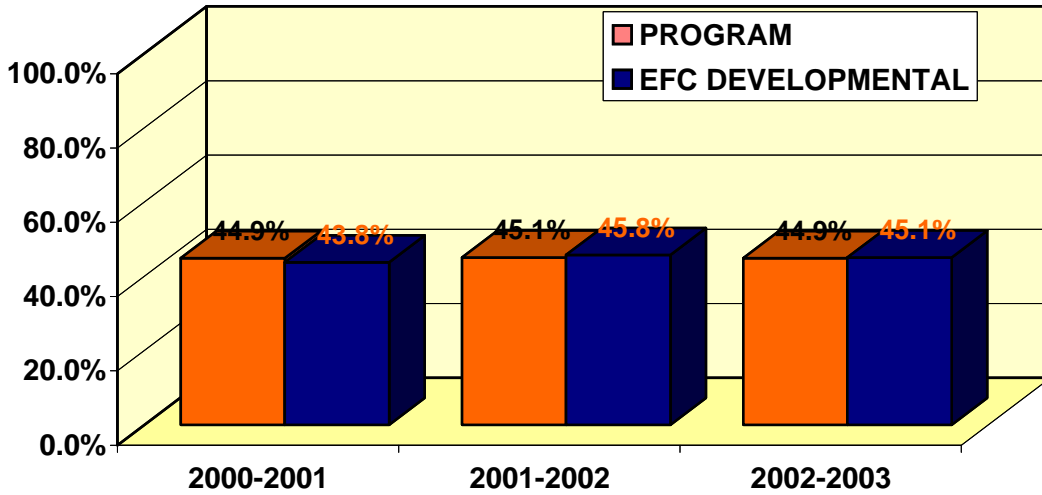
	% Change					
	96-97 to 97-98	97-98 to 98-99	98-99 to 99-00	99-00 to 00-01	00-01 to 01-02	01-02 to 02-03
Program	4.6%	19.4%	-5.2%	14.5%	13.4%	25.9%
All Developmental Programs	8.2%	8.4%	-4.4%	11.9%	11.7%	23.5%

CONTACT HOUR INDICATORS

	% Change Comparisons			Program Decreases?			Down more or increase less than all Developmental Programs?		
	5 year	3 year	1 year	In	YES/NO	Score	For	YES/NO	Score
	Program	17.0%	21.2%	25.9%	5 of 5 yrs	NO	5	5 yr avg.	NO
All Dev Prg.	12.0%	18.1%	23.5%	4 of 5 yrs	NO	5	3 yr avg.	NO	5
				Last 3 of 5 yrs	NO	5	1 yr avg.	NO	5
OF POSSIBLE 30 POINT TOTAL							30	100.0%	

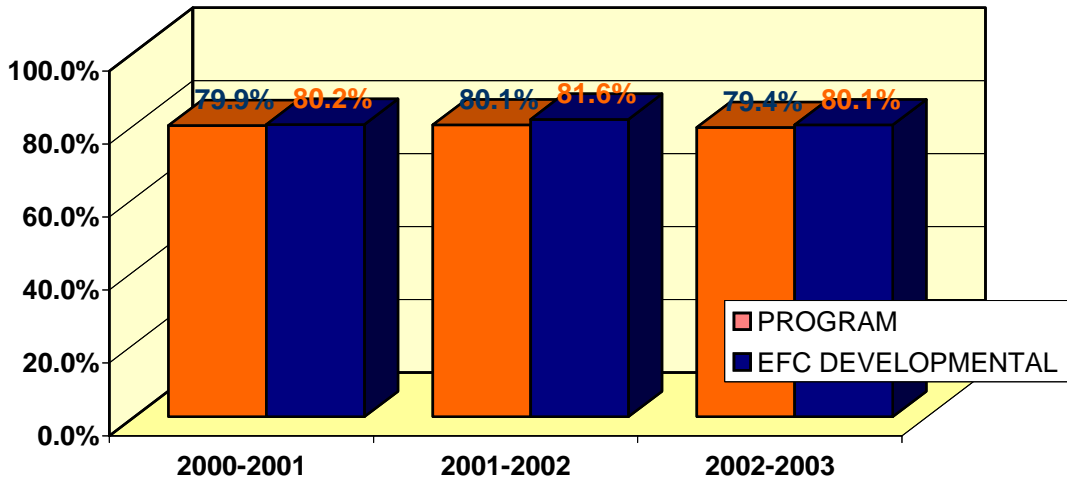
EASTFIELD COLLEGE
PROGRAM/DICIPLINE REVIEW
ACADEMIC YEAR 2002-2003

CLASSROOM SUCCESS DEVELOPMENTAL MATHEMATICS



% OF STUDENTS RECEIVING A, B OR C IN PROGRAM COURSES

	2000-2001	2001-2002	2002-2003
PROGRAM	44.9%	45.1%	44.9%
EFC-DEV	43.8%	45.8%	45.1%



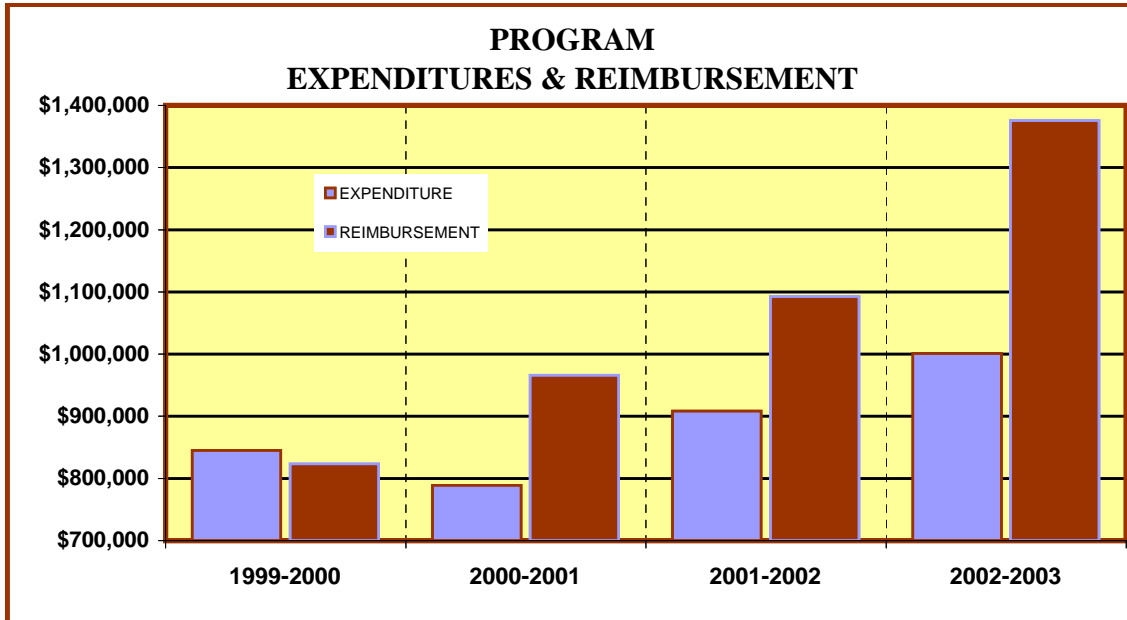
% COURSE COMPLETION FOR PROGRAM

	2000-2001	2001-2002	2002-2003
PROGRAM	79.9%	80.1%	79.4%
EFC-DEV	80.2%	81.6%	80.1%

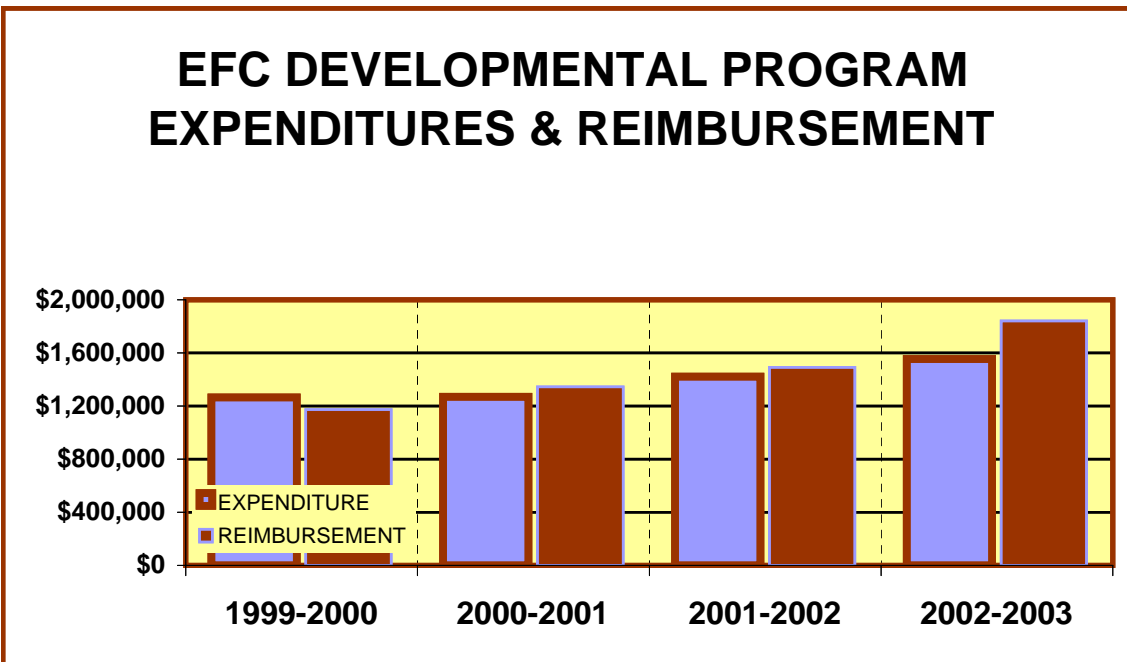
DEVELOPMENTAL SUCCESS INDICATORS

Completion Rate Over %75			Percent of A, B, & C Grades More than 50%			DEVELOPMENTAL SCORE OUT OF POSSIBLE 6 PTS	
In	YES/NO	Score	In	YES/NO	Score	#	%
2002-2003	YES	3	2002-2003	NO	0	3	50%

**EASTFIELD COLLEGE
PROGRAM REVIEW
ACADEMIC YEAR 2002 - 2003**



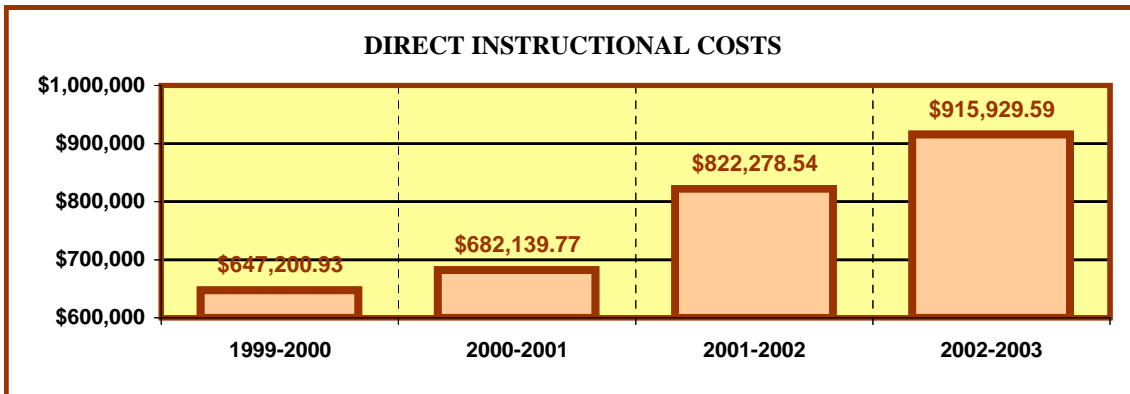
PROGRAM				
	1999-2000	2000-2001	2001-2002	2002-2003
EXPENDITURES	\$ 845,177.00	\$ 789,267.94	\$ 908,339.99	\$ 1,001,163.86
REIMBURSEMENT	\$ 823,404.52	\$ 966,308.16	\$ 1,092,801.60	\$ 1,375,704.00



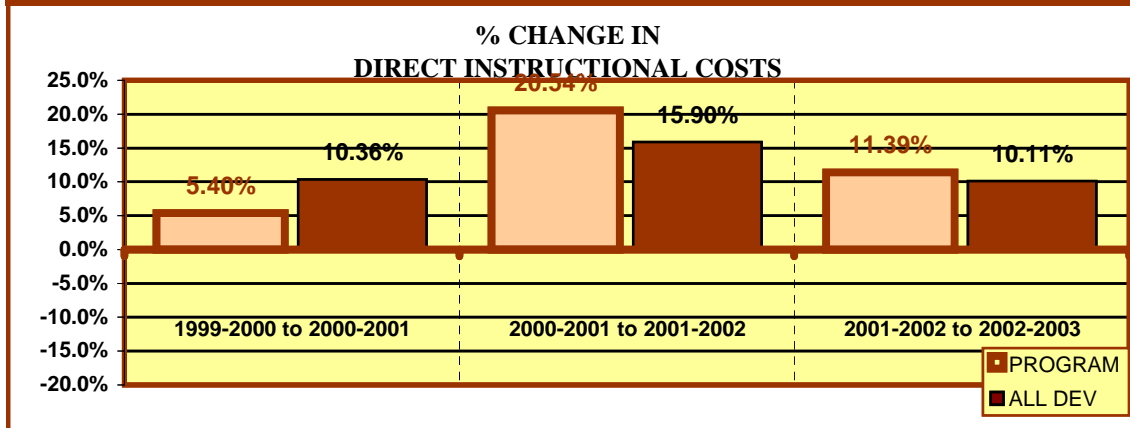
All EFC DEVELOPMENTAL PROGRAMS				
	1999-2000	2000-2001	2001-2002	2002-2003
EXPENDITURES*	\$ 1,264,880.22	\$ 1,269,433.17	\$ 1,422,118.65	\$ 1,555,071.56
REIMBURSEMENT*	\$ 1,174,165.48	\$ 1,345,107.36	\$ 1,492,473.60	\$ 1,842,072.00

*PROGRAMS HAVE SOMETIMES SPLIT OR BEEN COMBINED FROM YEAR TO YEAR

**EASTFIELD COLLEGE
PROGRAM REVIEW
ACADEMIC YEAR 2002 - 2003**



	DIRECT INSTRUCTIONAL COSTS			
	1999-2000	2000-2001	2001-2002	2002-2003
Program	\$ 647,200.93	\$ 682,139.77	\$ 822,278.54	\$ 915,929.59
All EFC Developmental	\$ 1,024,260.85	\$ 1,130,406.88	\$ 1,310,140.56	\$ 1,442,571.29



	% CHANGE IN DIRECT INSTRUCT. COSTS		
	1999-2000 to 2000-2001	2000-2001 to 2001-2002	2001-2002 to 2002-2003
PROGRAM	5.40%	20.54%	11.39%
All EFC Developmental Programs	10.36%	15.90%	10.11%

FINANCIAL INDICATORS

FALL, 2002 PROGRAM/DISCIPLINE (CostCenter) Reimbursement to Cost Center Expenses is positive in					
2002-2003		BOTH 2002-2003 & 2001-2002		3 OF LAST 4 YEARS	
YES/NO	Score	YES/NO	Score	YES/NO	Score
YES	3	YES	3	YES	3
DIRECT INSTRUCTIONAL COSTS DECREASED OR REMAINED THE SAME BETWEEN:					
2001-2002 & 2002-2003		1999-2000 & 2002-2003		BOTH 01-02 & 02-03 AND 00-01 & 01-02	
YES/NO	Score	YES/NO	Score	YES/NO	Score
NO	0	NO	0	NO	0
INSTRUCTIONAL COSTS DECREASED MORE OR INCREASE LESS THAN DEV 01-02 TO 02-03			SCORE OF A POSSIBLE 21 POINT TOTAL		
YES/NO	Score	SCORE		%	
NO	0	9	42.9%		
OVERALL REVIEW TOTAL OF POSSIBLE 87 POINTS					
			SCORE	%	
			72	82.8%	