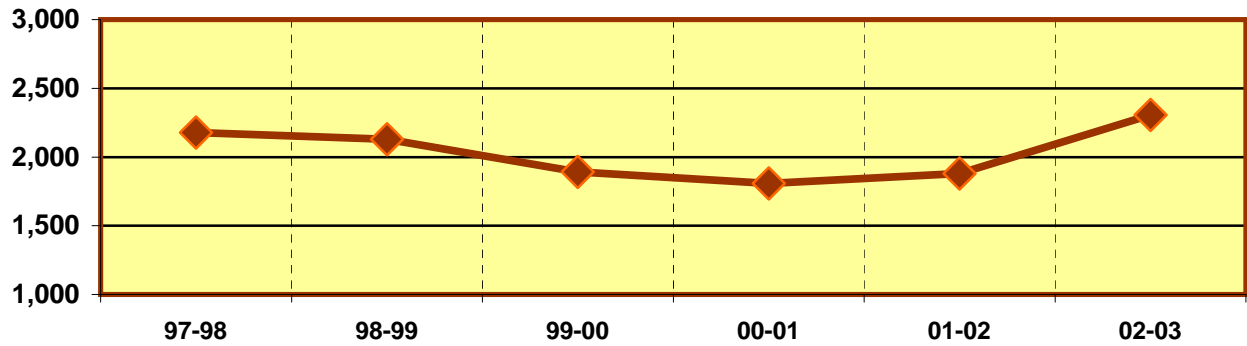


**EASTFIELD COLLEGE
PROGRAM/DISCIPLINE REVIEW
ACADEMIC YEAR 2002 - 2003**

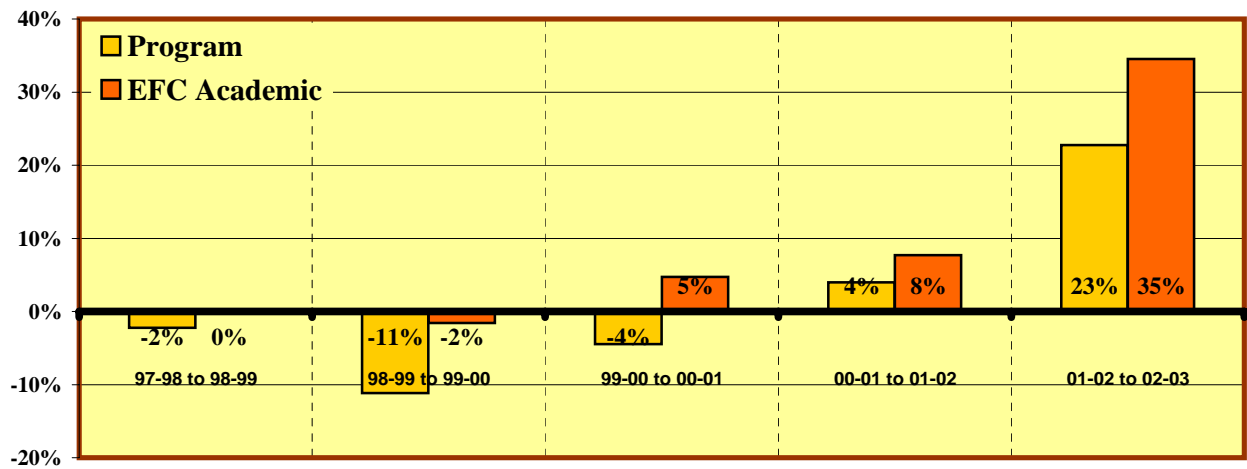
PHYSICAL EDUCATION (PHED)

PROGRAM ENROLLMENT



	Enrollments					
	97-98	98-99	99-00	00-01	01-02	02-03
Program	2,178	2,129	1,891	1,807	1,879	2,307
All EFC Academic Programs	29,344	29,282	28,818	30,183	32,502	43,718

% Change in Enrollment



	% Change				
	97-98 to 98-99	98-99 to 99-00	99-00 to 00-01	00-01 to 01-02	01-02 to 02-03
Program	-2.2%	-11.2%	-4.4%	4.0%	22.8%
All EFC Academic Programs	-0.2%	-1.6%	4.7%	7.7%	34.5%

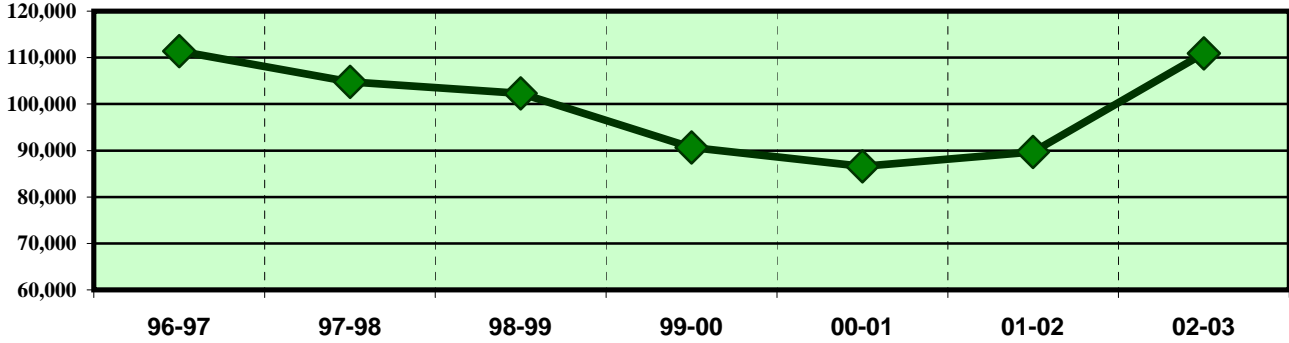
ENROLLMENT INDICATORS

	% Change Comparisons			Program Decreases?			Down more or increase less than all Academic Programs?		
	5 year	3 year	1 year	In	YES/NO	Score	For	YES/NO	Score
	Program	1.2%	7.3%	22.8%	5 of 5 yrs	NO	5	5 yr avg.	YES
All ACAD	9.8%	17.2%	34.5%	4 of 5 yrs	NO	5	3 yr avg.	YES	1
				Last 3 of 5 yrs	NO	5	1 yr avg.	YES	3
OF POSSIBLE 30 POINT TOTAL								19	63.3%

**EASTFIELD COLLEGE
PROGRAM/DISCIPLINE REVIEW
ACADEMIC YEAR 2002 - 2003**

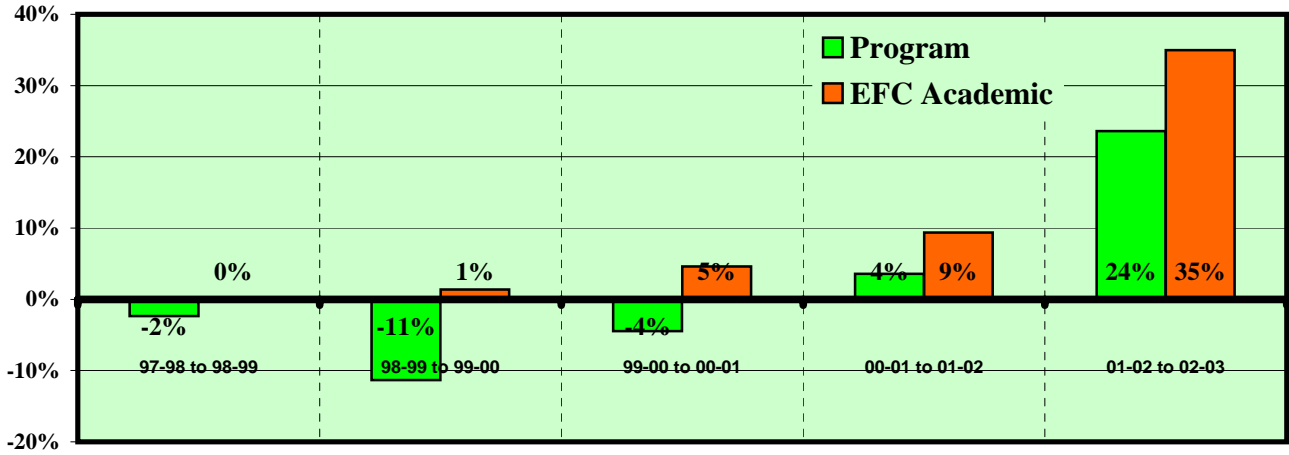
PHYSICAL EDUCATION (PHED)

CONTACT HOURS



	CONTACT HOURS						
	96-97	97-98	98-99	99-00	00-01	01-02	02-03
Program	111,408	104,768	102,304	90,688	86,624	89,710	110,896
All Academic Programs	1,633,472	1,609,976	1,610,056	1,632,169	1,707,744	1,867,774	2,521,156

% Change in Contact Hours



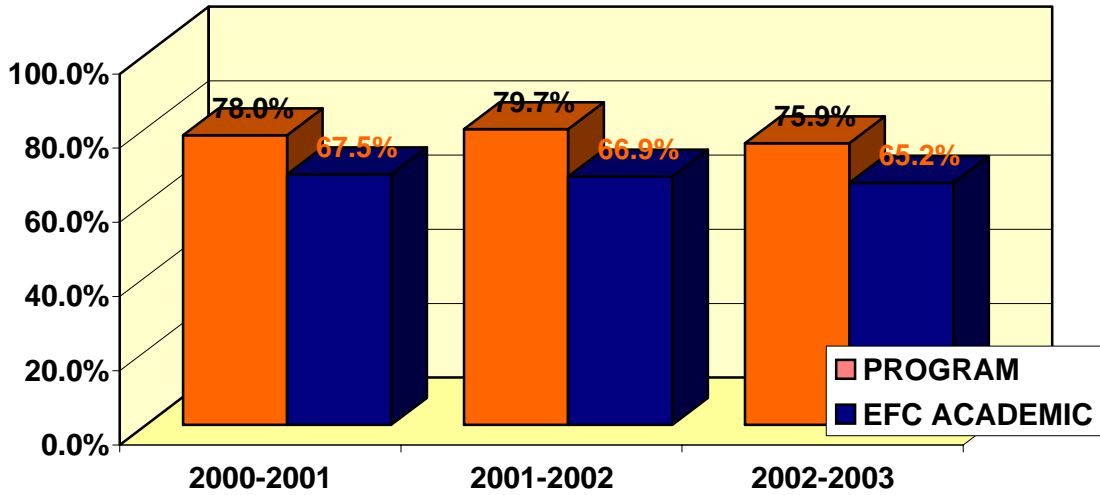
	% Change					
	96-97 to 97-98	97-98 to 98-99	98-99 to 99-00	99-00 to 00-01	00-01 to 01-02	01-02 to 02-03
Program	-6.0%	-2.4%	-11.4%	-4.5%	3.6%	23.6%
All Academic Programs	-1.4%	0.0%	1.4%	4.6%	9.4%	35.0%

CONTACT HOUR INDICATORS

	% Change Comparisons			Program Decreases?			Down more or increase less than all Academic Programs?		
	5 year	3 year	1 year	In	YES/NO	Score	For	YES/NO	Score
Program	1.2%	7.4%	23.6%	5 of 5 yrs	NO	5	5 yr avg.	YES	0
All Acad Prg.	11.3%	18.2%	35.0%	4 of 5 yrs	NO	5	3 yr avg.	YES	1
				Last 3 of 5 yrs	NO	5	1 yr avg.	YES	3
OF POSSIBLE 30 POINT TOTAL								19	63.3%

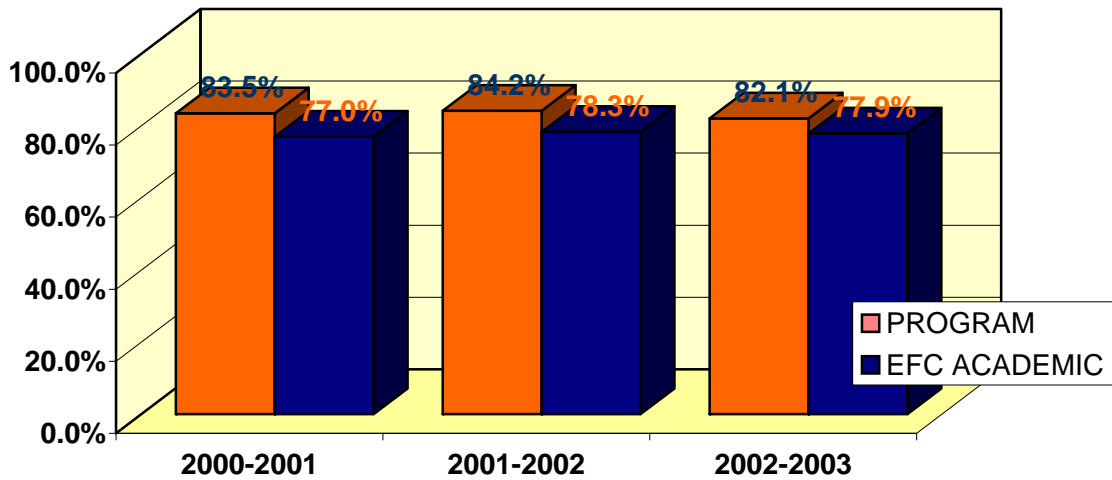
EASTFIELD COLLEGE
PROGRAM/DICIPLINE REVIEW
ACADEMIC YEAR 2002-2003

**CLASSROOM SUCCESS
PHYSICAL EDUCATION (PHED)**



% OF STUDENTS RECEIVING A, B OR C IN PROGRAM COURSES

	2000-2001	2001-2002	2002-2003
PROGRAM	78.0%	79.7%	75.9%
EFC-ACAD	67.5%	66.9%	65.2%



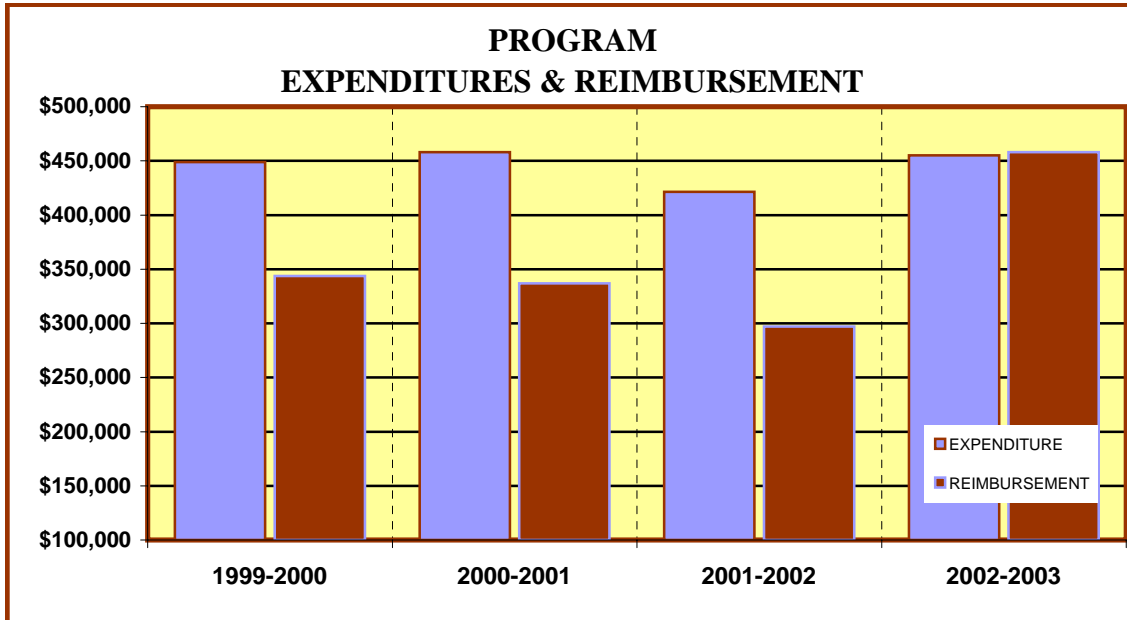
% COURSE COMPLETION FOR PROGRAM

	2000-2001	2001-2002	2002-2003
PROGRAM	83.5%	84.2%	82.1%
EFC-ACAD	77.0%	78.3%	77.9%

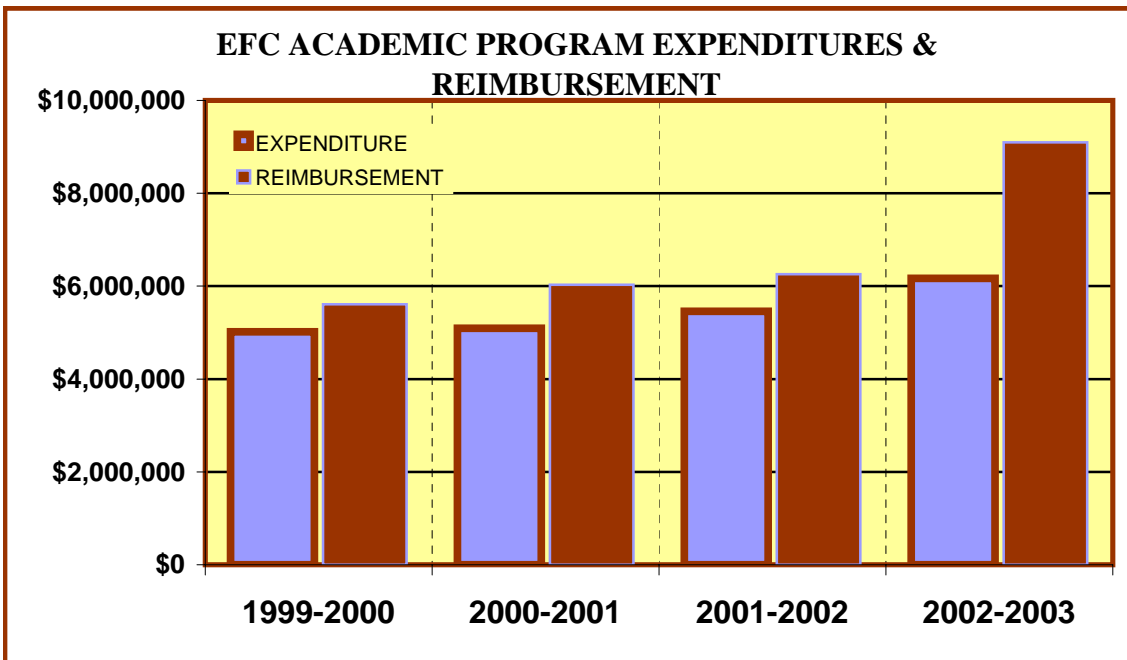
ACADEMIC SUCCESS INDICATORS

Completion Rate Over %75			Percent of A, B, & C Grades More than 50%			ACADEMIC SCORE OUT OF POSSIBLE 6 POINT SCORE	
In	YES/NO	Score	In	YES/NO	Score	#	%
2002-2003	YES	3	2002-2003	YES	3	6	100%

**EASTFIELD COLLEGE
ACADEMIC YEAR 2002 - 2003**



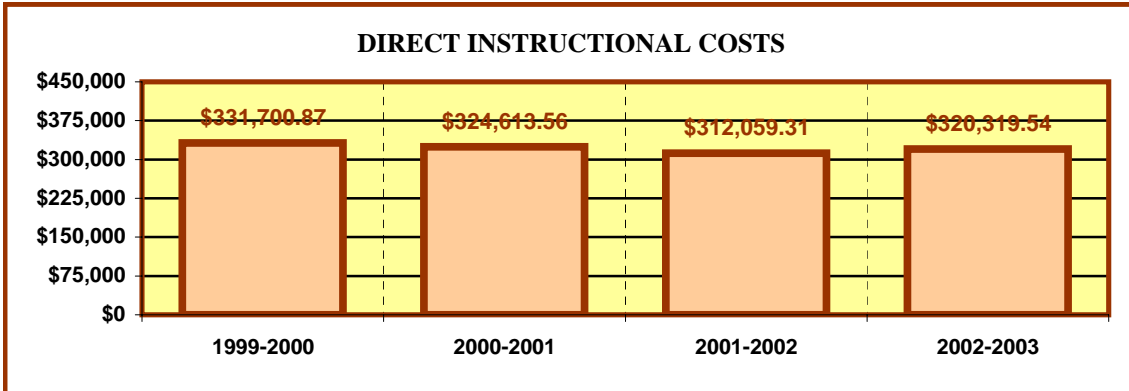
PROGRAM				
	1999-2000	2000-2001	2001-2002	2002-2003
EXPENDITURES	\$ 448,907.07	\$ 458,062.51	\$ 421,442.59	\$ 455,055.64
REIMBURSEMENT	\$ 343,707.52	\$ 336,967.36	\$ 296,940.10	\$ 458,000.48



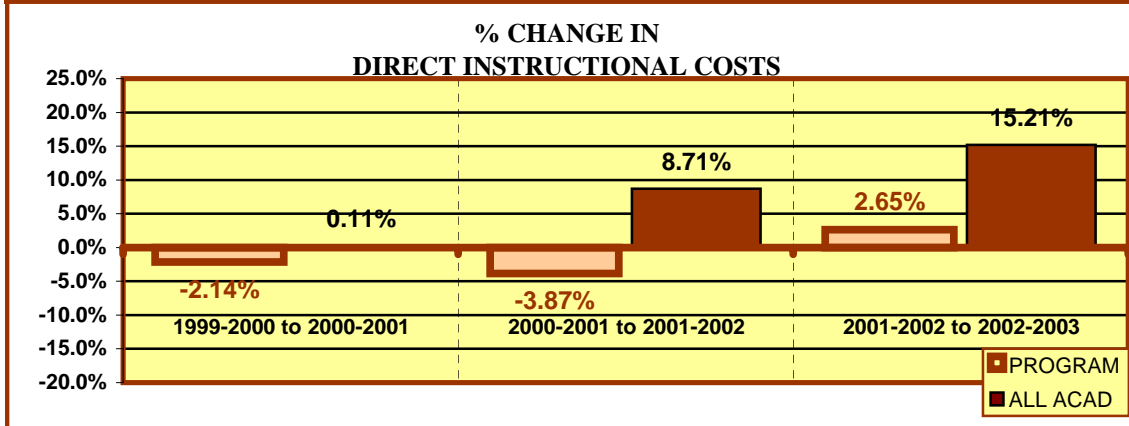
All EFC ACADEMIC PROGRAMS				
	1999-2000	2000-2001	2001-2002	2002-2003
EXPENDITURES*	\$ 5,015,641.39	\$ 5,092,920.92	\$ 5,458,424.21	\$ 6,170,123.68
REIMBURSEMENT*	\$ 5,612,853.21	\$ 6,030,529.36	\$ 6,259,320.74	\$ 9,097,655.76

*TOTALS VARY FROM YEAR TO YEAR DUE TO ADDITION OR DELETION OF PROGRAMS

**EASTFIELD COLLEGE
ACADEMIC YEAR 2002 - 2003**



	DIRECT INSTRUCTIONAL COSTS			
	1999-2000	2000-2001	2001-2002	2002-2003
Program	\$ 331,700.87	\$ 324,613.56	\$ 312,059.31	\$ 320,319.54
All EFC Academic	\$ 4,287,160.88	\$ 4,291,812.69	\$ 4,665,629.90	\$ 5,375,293.29



	% CHANGE IN DIRECT INSTRUCT. COSTS		
	1999-2000 to 2000-2001	2000-2001 to 2001-2002	2001-2002 to 2002-2003
PROGRAM	-2.14%	-3.87%	2.65%
All EFC Academic Programs	0.11%	8.71%	15.21%

FINANCIAL INDICATORS

FALL, 2002 PROGRAM/DISCIPLINE (CostCenter) Reimbursement to Cost Center Expenses is positive in					
2002-2003		BOTH 2002-2003 & 2001-2002		3 OF LAST 4 YEARS	
YES/NO	Score	YES/NO	Score	YES/NO	Score
YES	3	NO	0	NO	0
DIRECT INSTRUCTIONAL COSTS DECREASED OR REMAINED THE SAME BETWEEN:					
2001-2002 & 2002-2003		1999-2000 & 2002-2003		BOTH 01-02 & 02-03 AND 00-01 & 01-02	
YES/NO	Score	YES/NO	Score	YES/NO	Score
NO	0	YES	3	NO	0
INSTRUCTIONAL COSTS DECREASED MORE OR INCREASE LESS THAN ACAD 01-02 TO 02-03			SCORE OF A POSSIBLE 21 POINT TOTAL		
YES/NO	Score	SCORE		%	
YES	3	9		42.9%	
OVERALL REVIEW TOTAL OF POSSIBLE 87 POINTS					
			SCORE		%
			53		60.9%